

Connect More, Cover Everything.

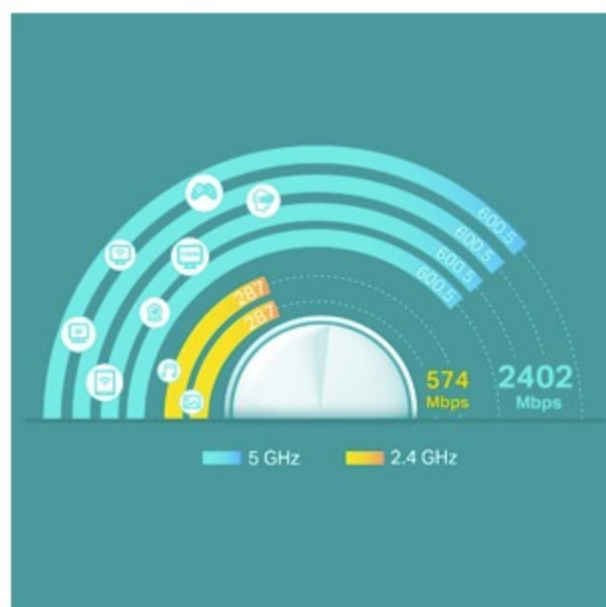
AX3000 Whole Home Mesh Wi-Fi System

Deco X60



Wi-Fi 6

Game-Changer: Wi-Fi 6 Mesh



6 Streams: Greater Experience, Less Lag

With six simultaneous data streams, there's more than enough bandwidth for connected devices. This means to enjoy more responsive gaming or 8K streaming with flawless video and clear audio even when multiple devices transmitting data at the same time.

Broader Coverage

With clearer and stronger signals enhanced by BSS Color and Beamforming, Deco X60 boosts broader whole home Wi-Fi with great performance. Wireless connections and optional Ethernet backhaul work together to link Deco units, providing even faster network speeds and truly seamless coverage. Want more coverage? Simply add another Deco.

Seamless Roaming with One Wi-Fi Name

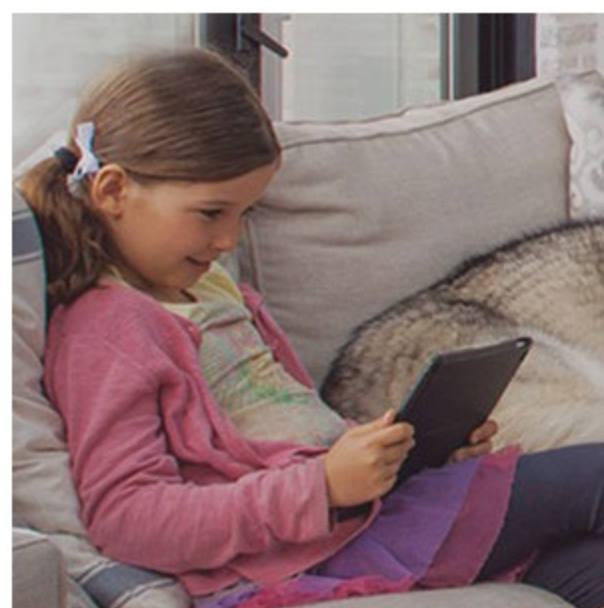
TP-Link Mesh means Deco units work together to form one unified network. Your phone or tablet automatically connects to the fastest Deco as you move through your home, creating a truly seamless Wi-Fi experience

HomeCare Your Home, Our Care



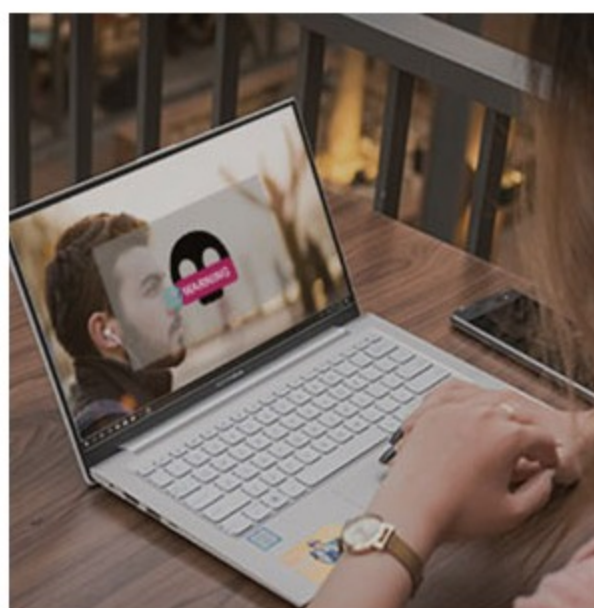
Quality of Service

Prioritize devices and applications for faster performance when needed



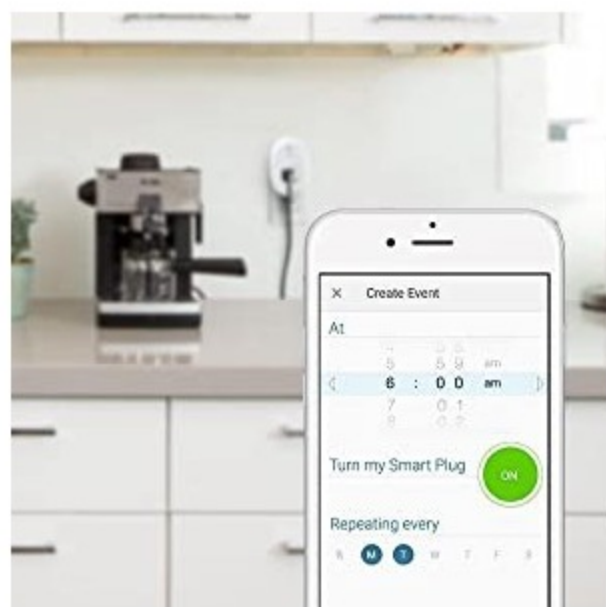
Robust Parental Controls

Block inappropriate content and restrict time spent online



Built-In Antivirus

Protect all connected devices in your home from online threats



Save Money by Running the House on your Schedule

The HS100 allows you to create schedules to automatically power on or off your home electronics and appliances at anytime. You can create a schedule for each device any day of the week, or customize it by a specific time in a day.

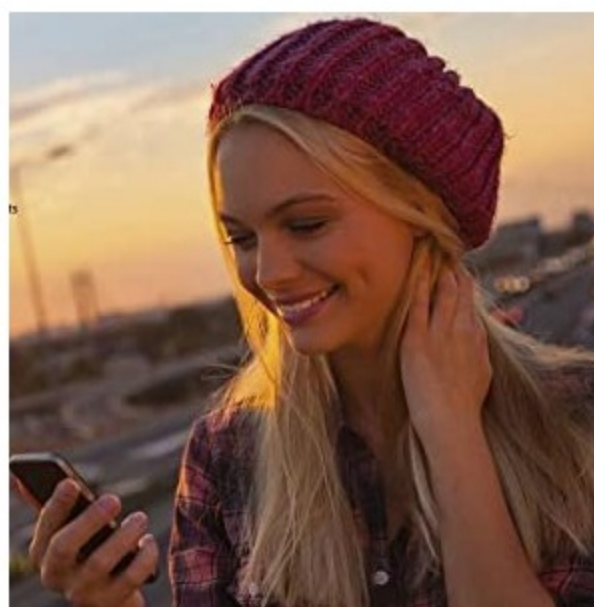
Keep energy bills low by effectively managing devices that use the most power. Scheduling allows you to prevent power-hungry devices from being left on longer than needed.

Have your devices run on your schedule, even when you're not there.



No Hub Required

The Smart Plug works with any Wi-Fi router without the need for a separate hub or paid subscription service.



Control from Anywhere

Your Smart Plug can be controlled through your existing Wi-Fi network via the free Kasa App*. Download the app to your smartphone or tablet and have access to turn your home devices on/off, set schedules and appear at home when you're away.

The Kasa App allows you to add as many Smart Plugs as you'd like to keep track of multiple appliances, whenever, wherever.

*Compatible with Android 4.1 and higher or iOS 9 and higher.



Appear at Home while you're Away

Have the Smart Plug work for you when you're out of town. Connecting a lamp to your smart plug can provide home security benefits. Set it to away mode, and the Smart Plug will automatically turn the light on and off to give the appearance that someone is home.



Never Leave Things Running

The Smart Plug gives you the peace of mind that you'll never leave devices running again. With the countdown timer feature, simply set a timer for the Smart Plug to turn off it's appliance automatically. Set it and forget it. It's that simple, giving you one less thing to worry about in your busy life.



Keep your Kids on Schedule

With the scheduling benefits of a Smart Plug, you have better control over your child's daily activities. Make sure the television is turned off when they should be doing homework, or use a countdown feature to have any lamps shut off right before bedtime.