



PRIMUS



GLADIUS16000P | SETUP

PRIMUS



PRIMUS

I. WINDOWS REQUIREMENT

1

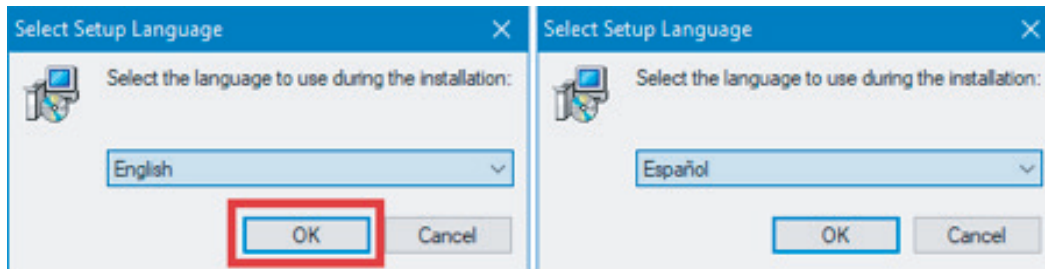
- Windows XP/ Windows Vista /Windows 7 /Windows 8 /Windows 10
- Available USB port (v1.1/2.0/3.0)
- 5MB of free disk space



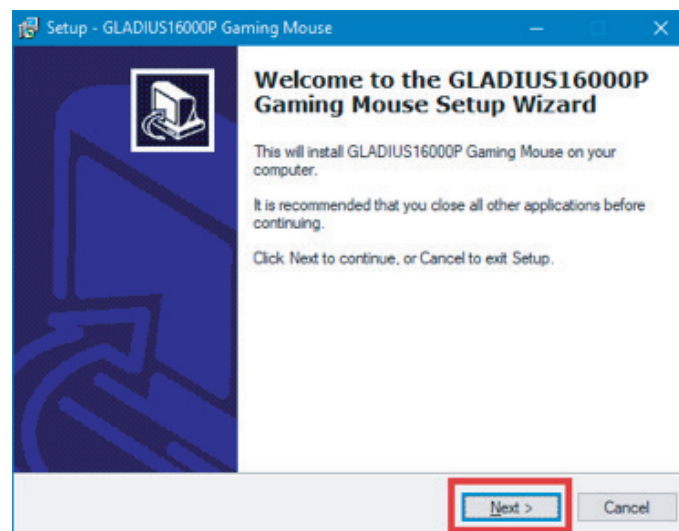
PRIMUS

II. SETUP

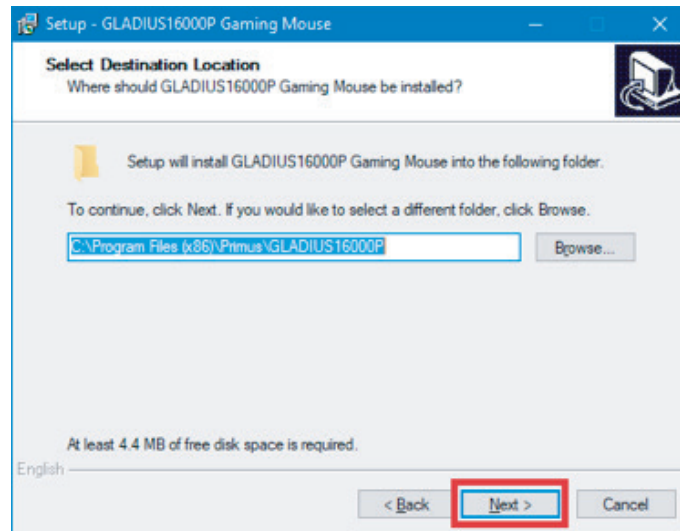
1. Download the gladius software from our website at primusgaming.com/software.
2. Connect the gaming mouse to an available USB port.
3. Double click the **GLADIUS16000P_SETUP** file.
4. You will be prompted to select the setup language. The available languages are, English or Spanish. Click the down arrow to choose the preferred language. Once done, click **OK**.



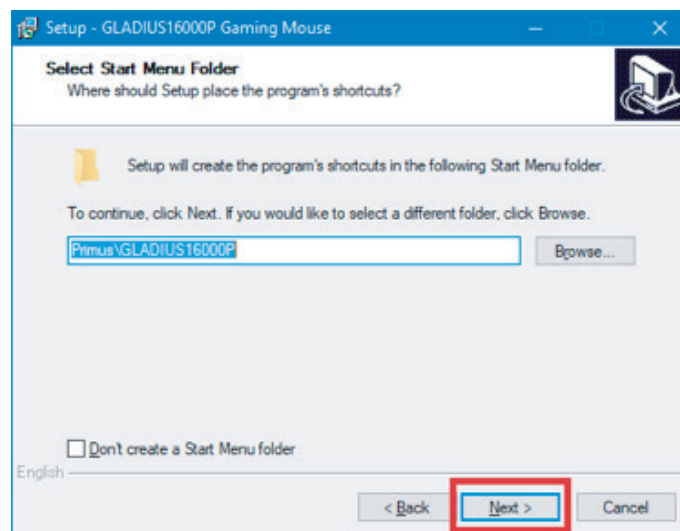
5. The welcome screen will appear. Click on **Next** to initiate the setup process.



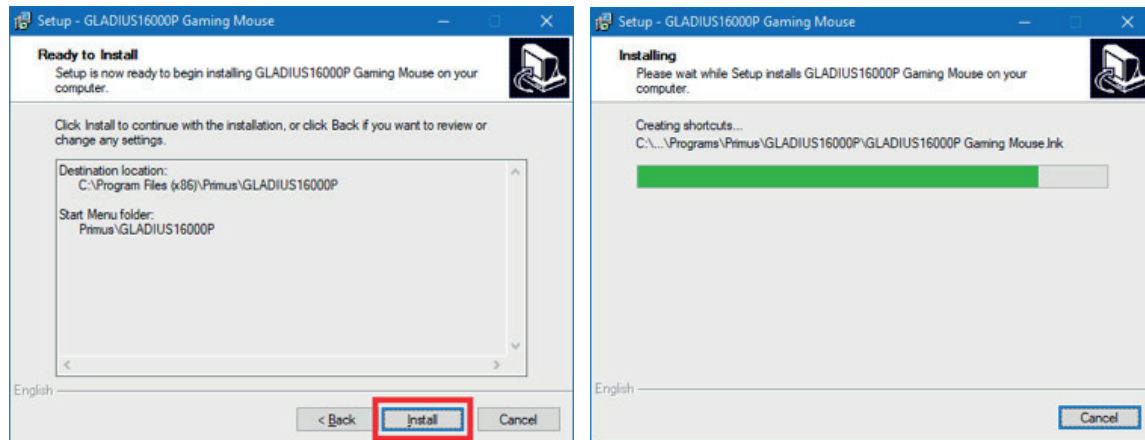
6. Select the destination where you want the software to be installed. We recommend keeping the default path, however you can choose a different location if desired. Please note the software will require 4.4MB of free disk space. Click **Next** to continue.



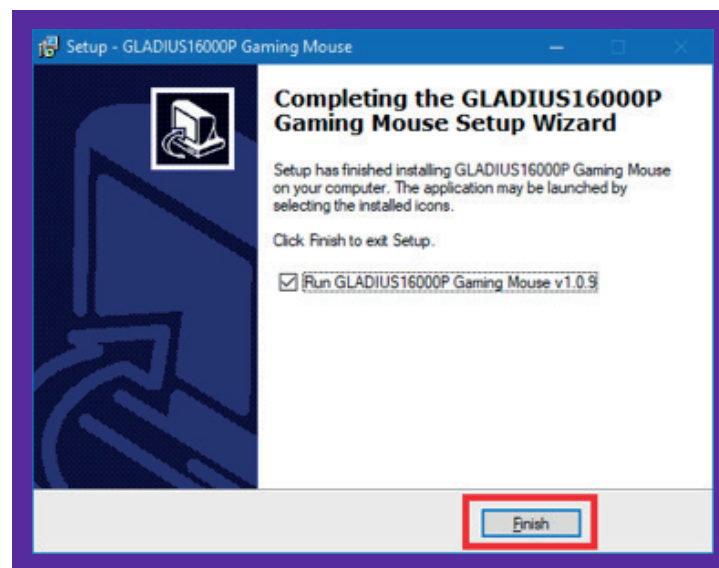
7. **Select Start Menu folder** location where you want the software to be displayed. The default location is Primus\GLADIUS16000P. You may change this path if desired. Click **Next** when done.



8. You are now ready to install your brand new Primus Gladius16000P gaming mouse.
Click on **Install**.



9. When downloading is complete, click on **Finish** to conclude the setup.



10. Double click the **GLADIUS16000P Gaming Mouse** desktop icon to launch the Main Interface.

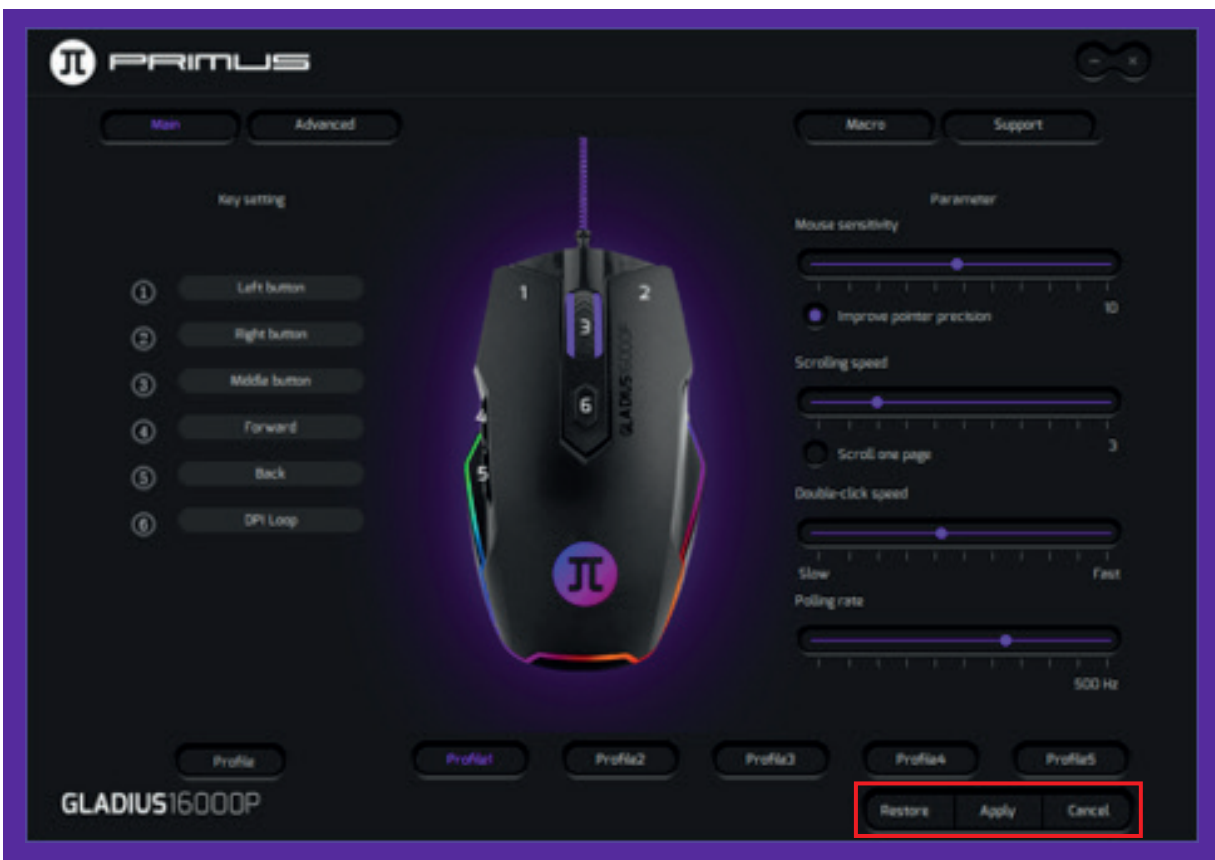


PRIMUS

III. MAIN SOFTWARE INTERFACE

- This gaming software allows you to configure the mouse buttons, sensitivity, scrolling speed, double-click speed, polling rate and profiles through a single user-friendly application.

- The **Restore**, **Apply** and **Cancel** buttons on the lower right corner of the screen give you the option of storing, restoring to default or discarding any newly selected configuration parameters.



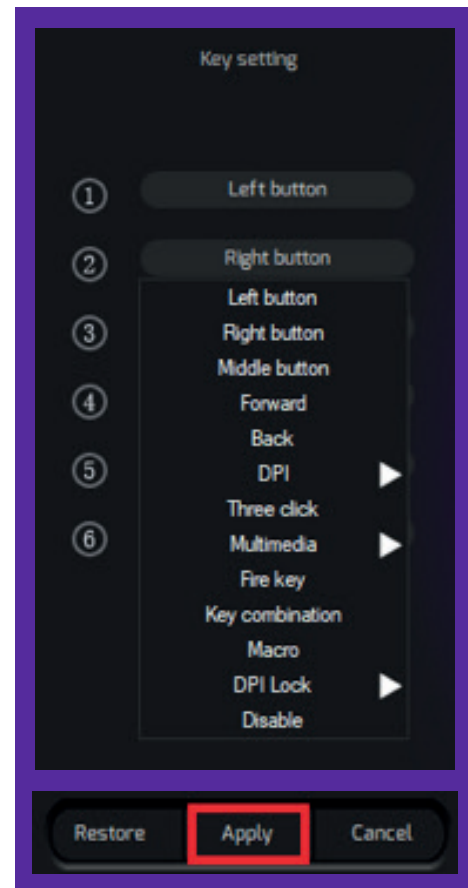
1. Key settings

The software supports custom buttons:

- **Mouse button:** Left, Center, Right, Back, and Forward
- **Game configurations:** Fire button, 3 Clicks, Key combination, and Macro
- **Multimedia and Internet command:** Media Player, Play/Pause, Next, Previous, Stop, Mute, Volume up, Volume down, Email, Calculator, Explorer, and Home page
- **DPI:** DPI+, DPI-, and DPI loop
- **DPI lock:** All DPI values
- **Disable button**

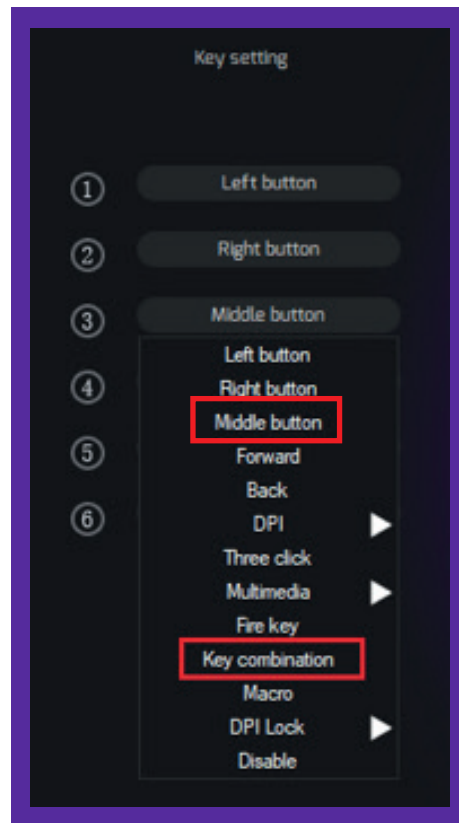
1.1 Setting up mouse buttons:

- Click on any mouse button you wish to change. This will bring up a sub menu of available commands.
- Choose one and then click **Apply** to save the setting.

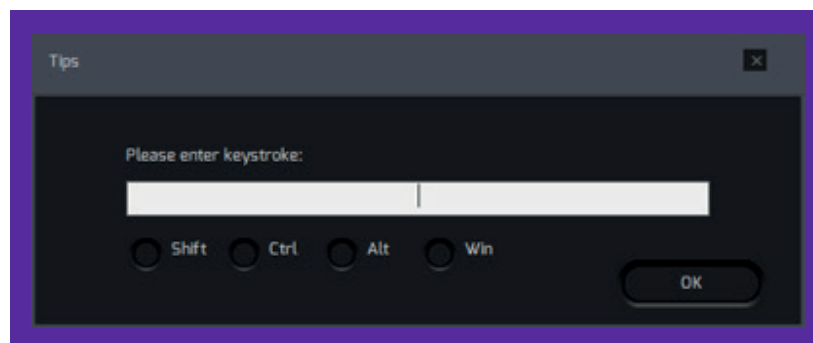


1.2 Key Combination mouse button:

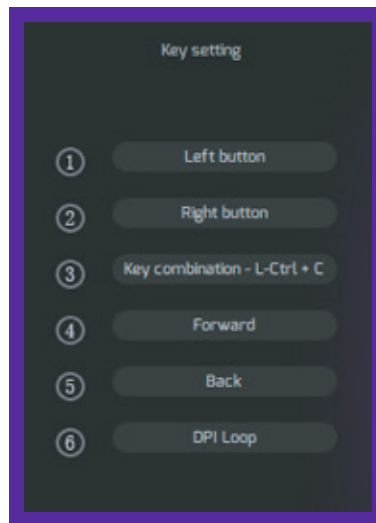
- Click on the button you wish to change to bring up the key menu. Then click on **Key combination**.
- For illustration purposes, we will change the **Middle** button to a Key combination button.



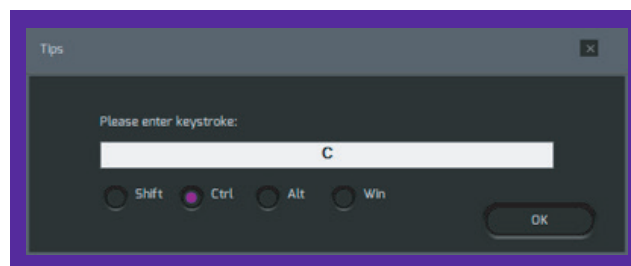
- The following popup window will be displayed:



- You can press any key combination you desire for Shift, Ctrl, Alt, and Windows.
- For illustration purposes, we will choose a key combination command for **Copy** (click on **Ctrl** in the options and press **C** on the keyboard).

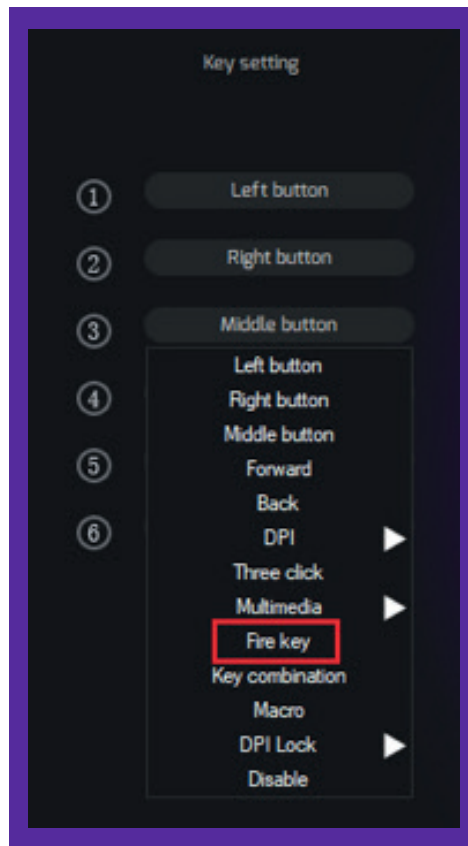


- Once done, press **OK** followed by **Apply** to save the setting. Now your middle mouse button can copy any highlighted text.

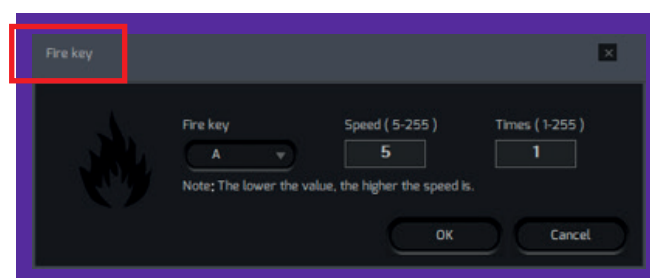


1.3 Fire Key for games:

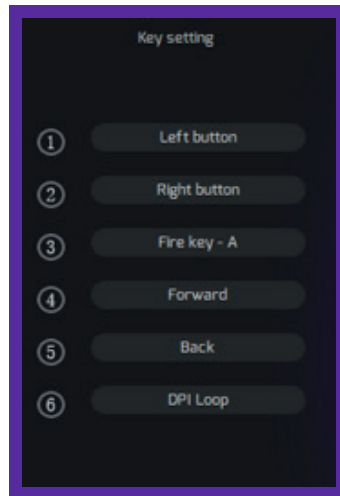
- Click on the button you wish to change to bring up the key menu. Then, click on **Fire key**.
- For illustration purposes, we will change the **Middle** button to a **Fire key** button.



- The **Fire key** window will be displayed. Here you can assign a command from the drop down menu.



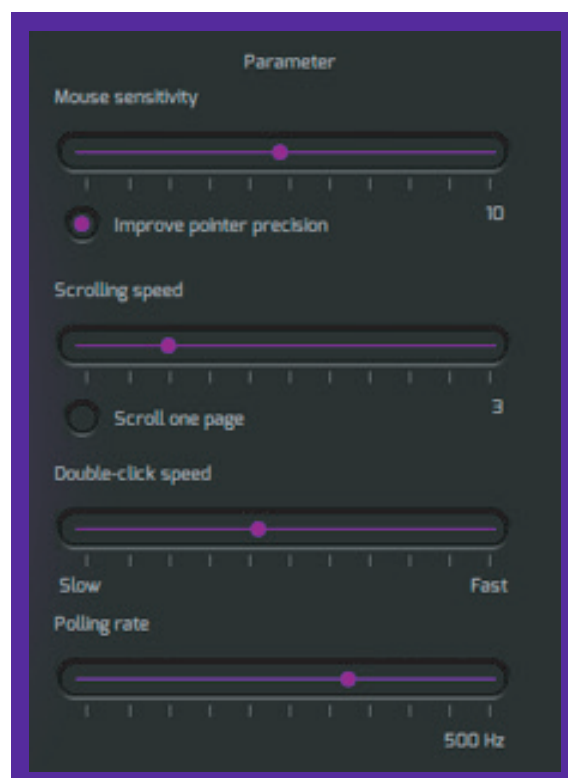
- Select the keyboard or mouse button to assign the action. You can also change the speed, and how many times it activates the **Fire key**. Once done, click **OK** to save your settings.



2. Parameter settings:

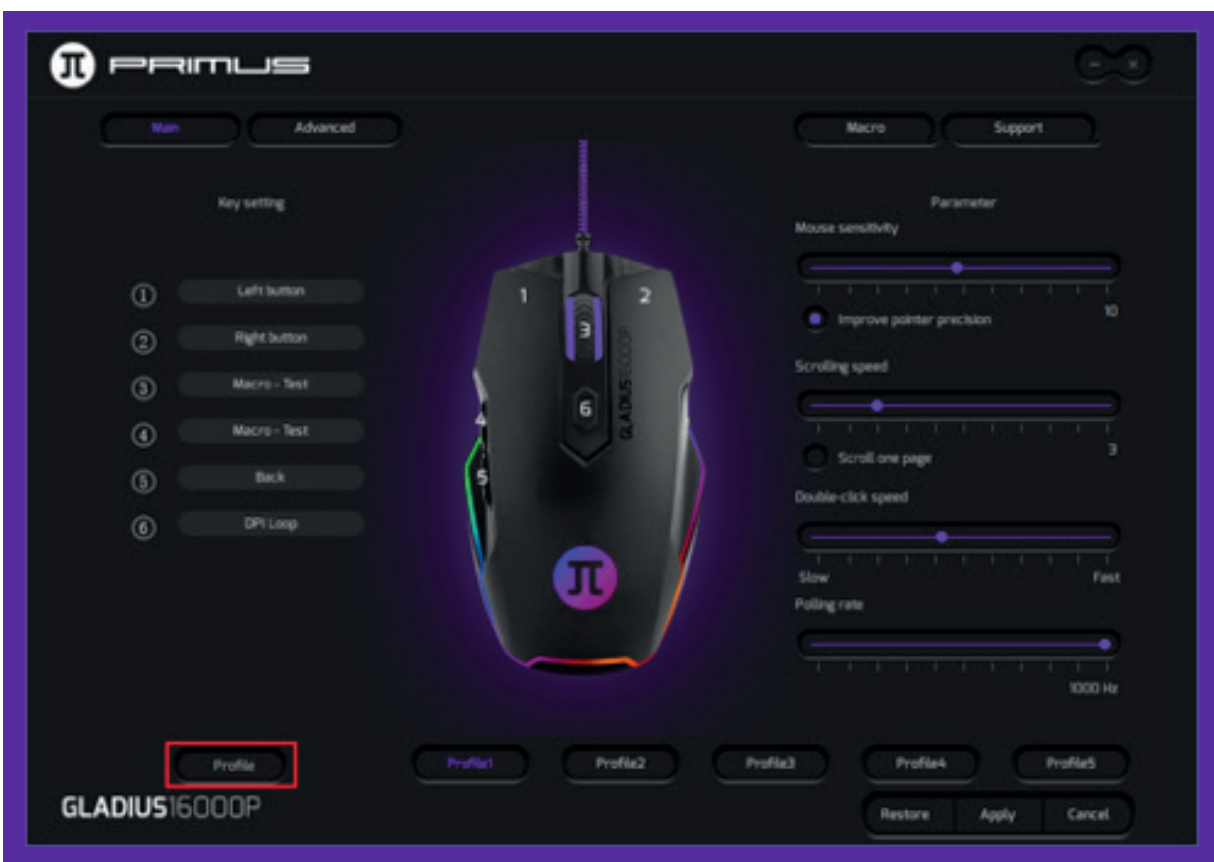
These settings are also found under Windows Mouse Properties.

This menu allows users to fine tune the Mouse sensitivity, Scrolling speed, Double-click speed, and Polling rate.

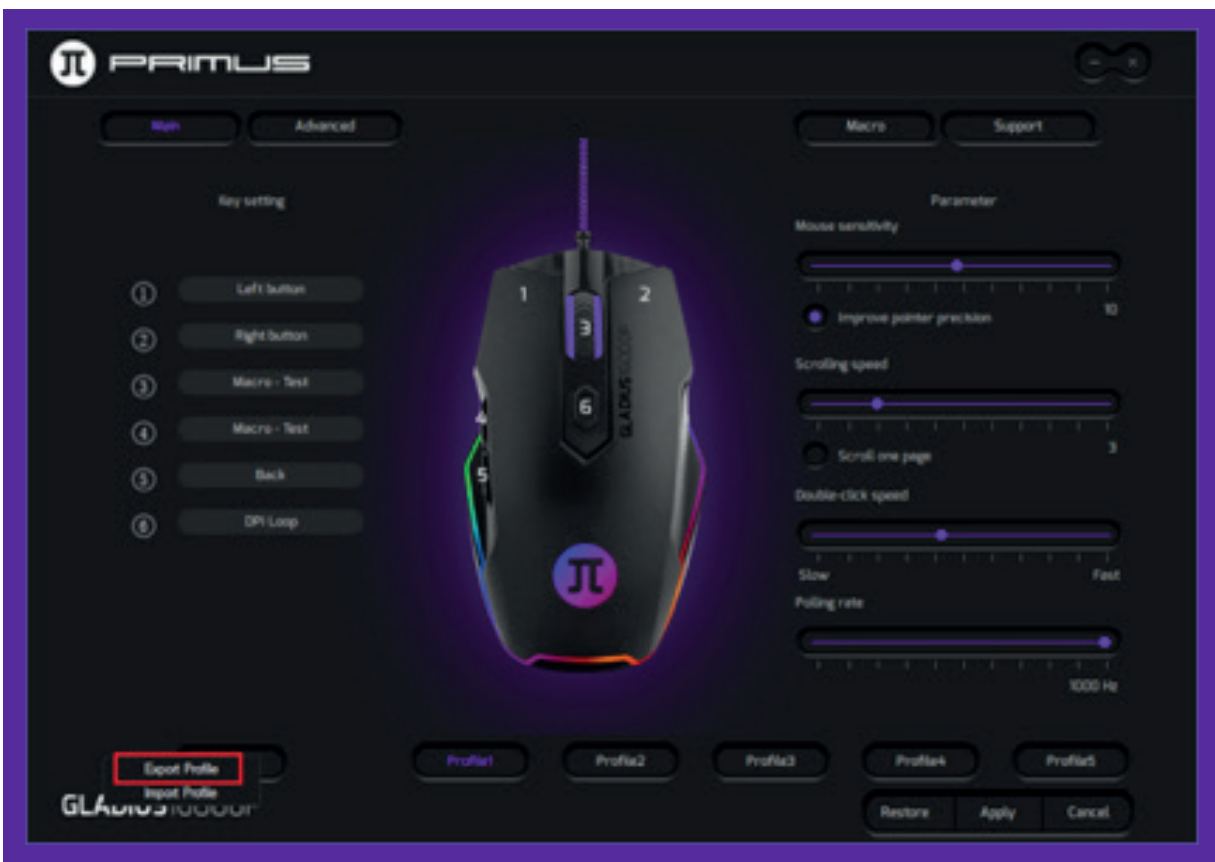


3. Setting up profiles:

- 5 different gaming profiles are available. These are useful for different game setups.
- Once you are done setting up your **Profile 1**, you can click on **Profile 2** and setup another profile, and so on.



- To save a backup of your profile, click on **Profile** followed by **Export Profile**.
- Select a folder where you want to save the profile and enter a name to identify it. Click on **Save** when done.



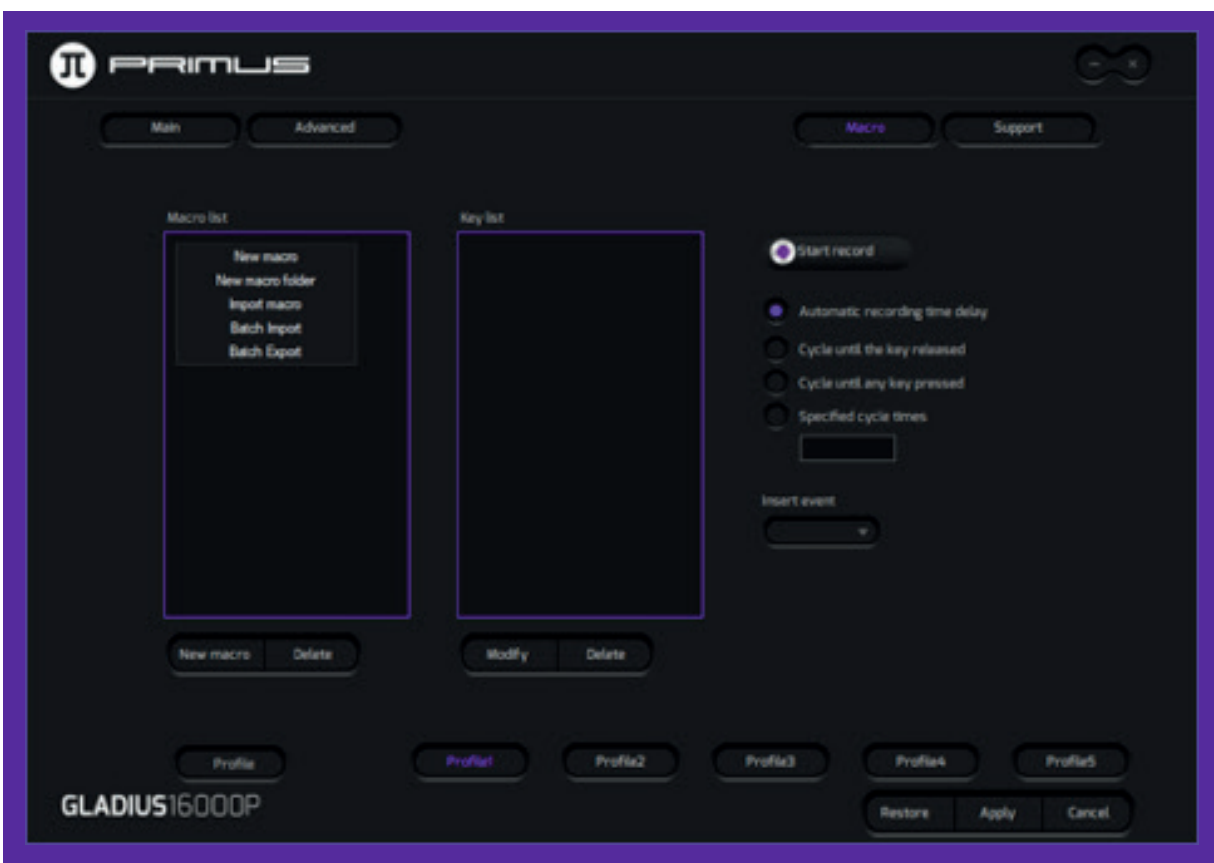
- To import a backup of your profile, click on **Profile** followed by **Import Profile**. Select the folder and the name of the profile you want to import, then click **Open**.

4. Setting up macros

This menu allows you to assign the macro actions for your mouse.

The Macro software has no limitation as to the number of command sequences that can be configured. Each macro supports up to 32 keys.

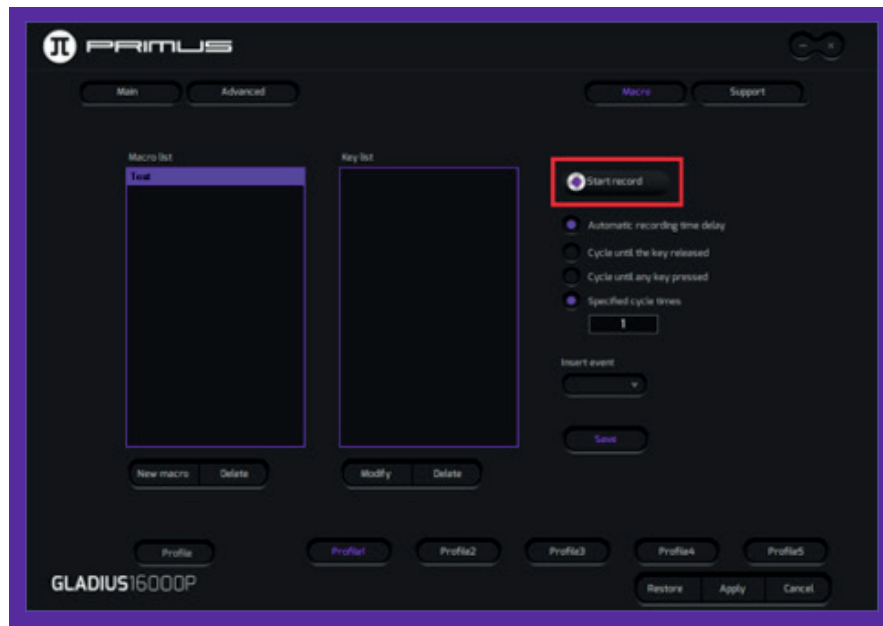
- Click on **Macro** on the main interface to open the macro configuration menu.
- Next, right-click on the empty space under **Macro list**:
 - **New macro**: Enter a name for your new macro.
 - **New macro folder**: Enter a name for your new macro folder.
 - **Import macro**: Import a previously saved macro.
 - **Batch Import**: Import a series of macros.
 - **Batch Export**: Export a series of macros.



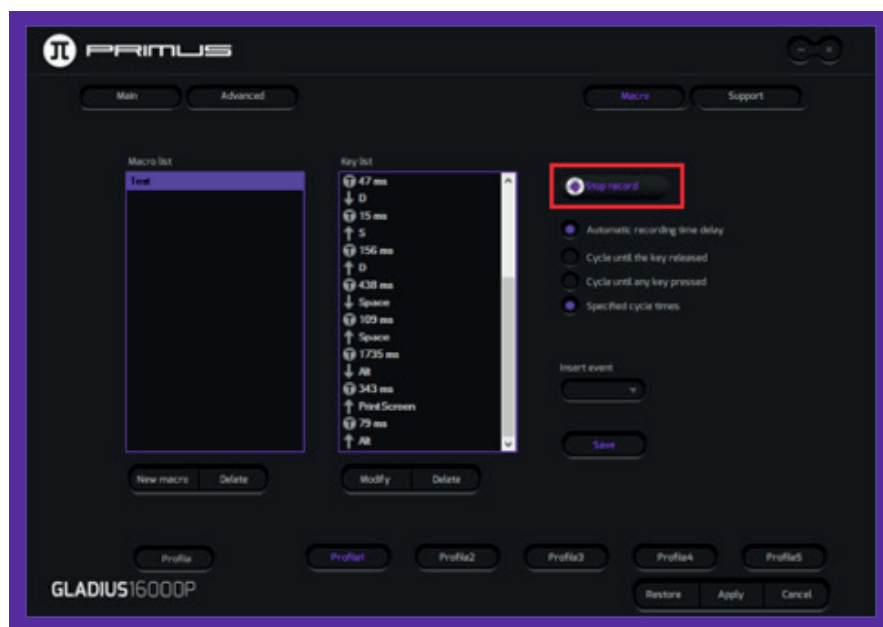
- To create a macro, right-click on the empty space under **Macro** list followed by **New macro**. Enter a name. In this illustration we will use **Test** to identify the macro. Click **OK** when done.



- Click on **Start record**. The software will start recording all the keystrokes you would like to add to the Macro.



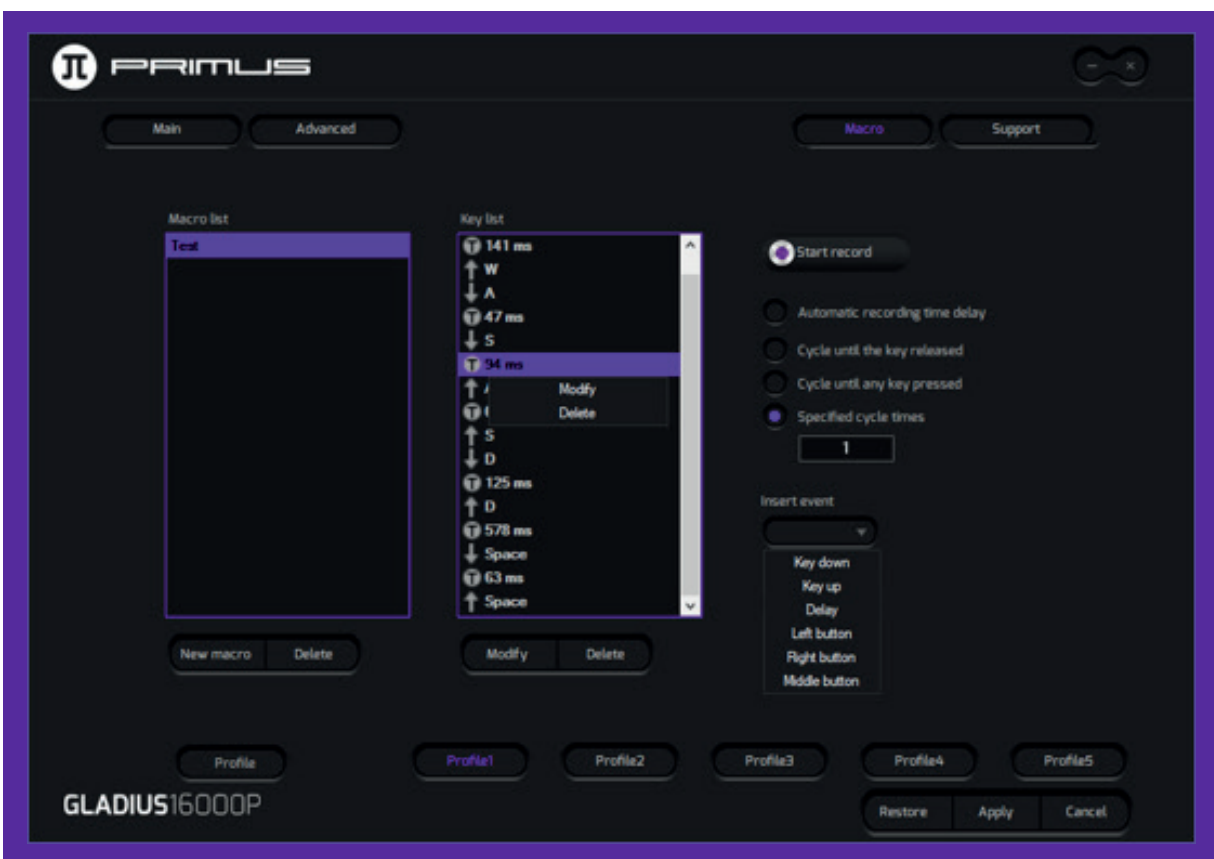
- Once done, click **Stop record**.



- Several options can be selected for the Macro key:

- Automatic recording time delay:** This will automatically record how long it takes between each key press.
- Cycle until the key released:** If you hold down the Macro button, it will continue to execute your macro over and over again until you release the Macro button.
- Cycle until any key pressed:** Press it once and it will continue to execute your macro until any key is pressed.
- Specified cycle times:** You can enter a specified time to run that Macro.

- A macro can also be modified or deleted.
- To **Modify** a macro, right-click the item in the Key list you wish to change. You can either modify the key stroke or the milliseconds between each keystroke.
- To erase the key or the time, select the **Delete** option by right-clicking on the desired item.
- **Insert event:** You can insert a certain event in the macro. Click the arrow under Insert event.
 - A drop down menu will come up with the following command options:
Key down, Key up, Delay, Left button, Right button, or Middle button.

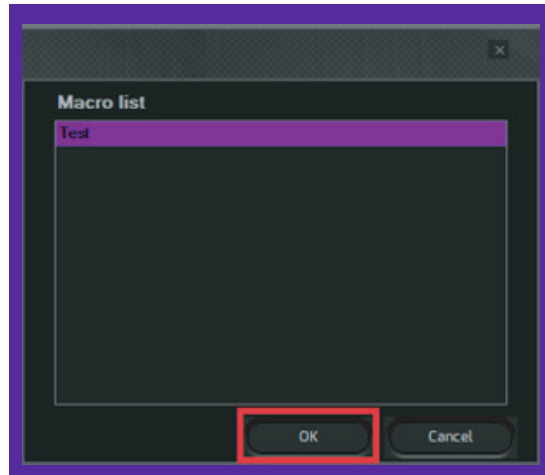


- Assign Macro to a mouse button:

- Click on the button to which the new command sequence will be assigned. Then click on Macro option from the menu.
- For the purposes of this guide, we will use the **Forward** button.



- Select a macro that you have previously created from the list, and then click **OK**.



Note: If the macro list is empty, it means that no sequence has been recorded. Go back to the previous section to configure your own macros

- When done, click **Apply** to save the settings.



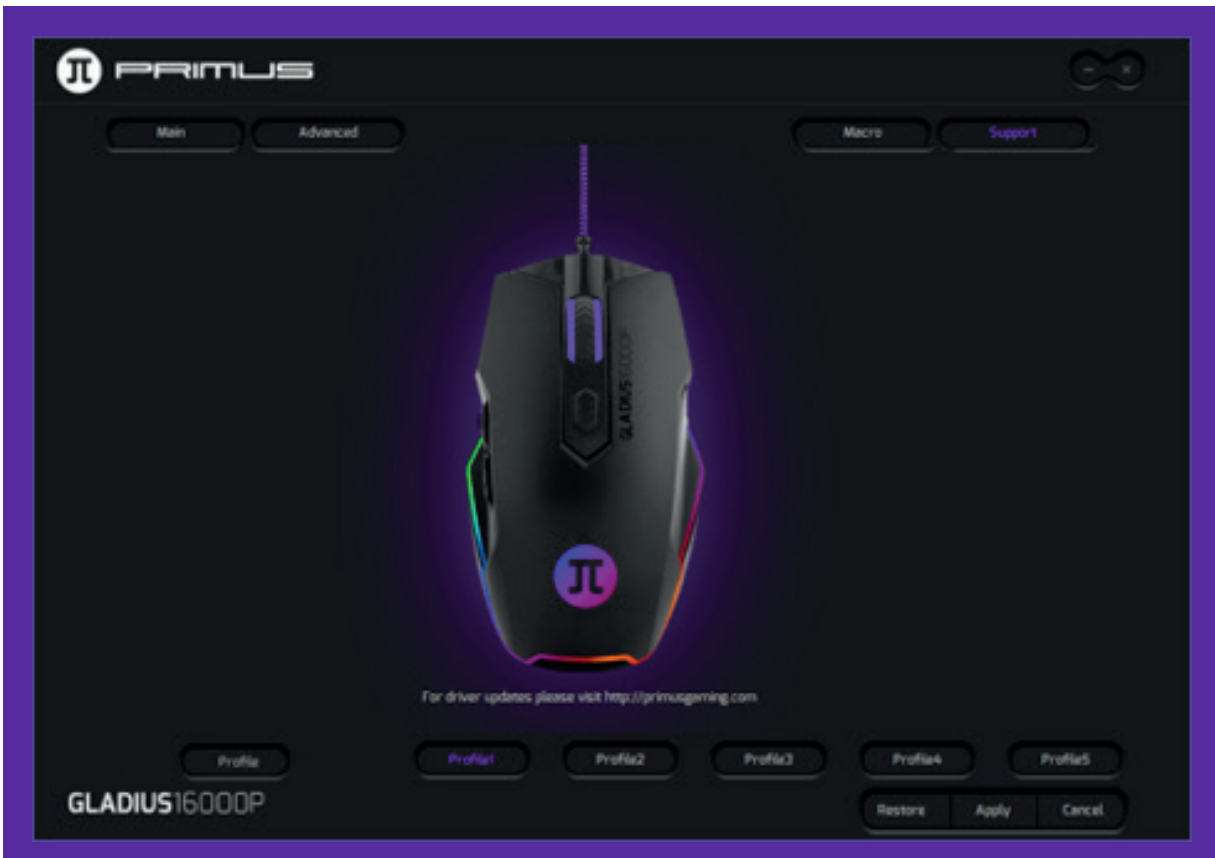
5. Advanced menu

- This menu allows you to assign the DPI value for the six available settings.
- It also includes the illumination effects and color selection for the mouse LED light.



6. Support

This section provides a direct link to our webpage, where you can find other products offered and look for the latest drivers and software updates.



7. Uninstall software

There are two ways to uninstall the software.

- Click Start and go to **Primus-Gladius16000P** folder. Click on **Uninstall** and follow the onscreen prompts.
- You can also open **Control Panel-Program and function**. Find the Gladius16000P Gaming Mouse option and click on **Uninstall**. Follow the onscreen prompts.



PRIMUS

SOFTWARE INSTALLATION GUIDE