



MagicRound Automatic Soap Dispenser

ASD-0001

Installation Manual



Quality Guarantee

*Thank you for choosing the automatic wall mount soap dispenser. Please read the instruction carefully before installation. This manual is for your reference only.



Features

- Hands free sensor operation improves hand washing hygiene.
- Easy installation and low-cost maintenance
- Battery powered.
- Stainless steel finish
- Suitable for schools, offices, supermarkets, hospitals, and other high-volume facilities

Specifications

Power	Supplied 9V (6 x AA Alkaline batteries)
Sensing Range	5 – 15 cm
Soap Vol per Drop	1 ml
Soap Bottle Volume	650 ml
Ambient Temperature	1 – 45 °C



Before Installation

- Locate position of soap dispenser.
- Ensure that soap dispenser does not interfere with anything above the lavatory/counter or shining surface top area. Must be installed 250 mm above the counter.
- Pay special attention so that the sensor surface is not flawed or scratched during the installation process.
- Before installing on the wall, check that no other piping and wiring is running behind hole locations. Wall should be sufficiently reinforced or risk failure due to soap case unit falling.
- Do not place other devices that use an inverter or infrared sensor near the faucet, as this may cause the faucet to malfunction.



Tools You will Need

- Power drill with 6 mm wall drill bit
- Flat head screwdriver
- Phillips screwdriver
- Ruler/tape measure

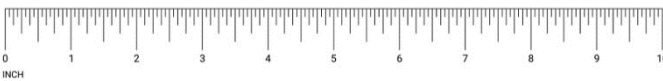
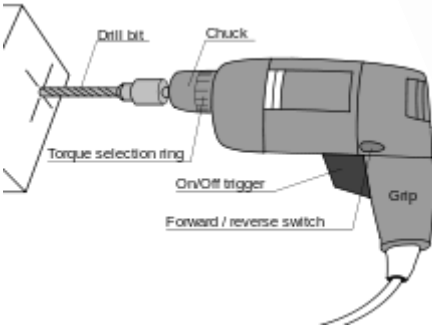
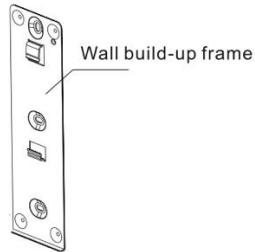
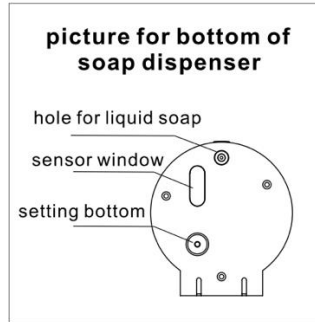
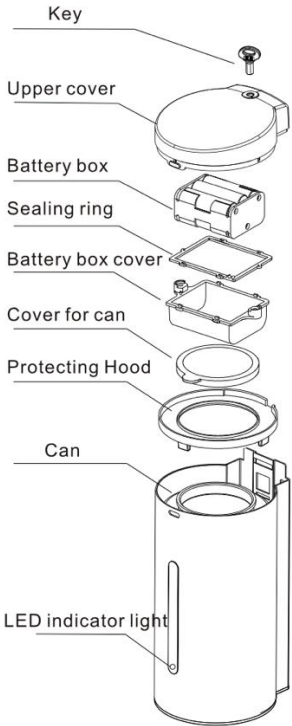


Illustration No. 1234567



Part List



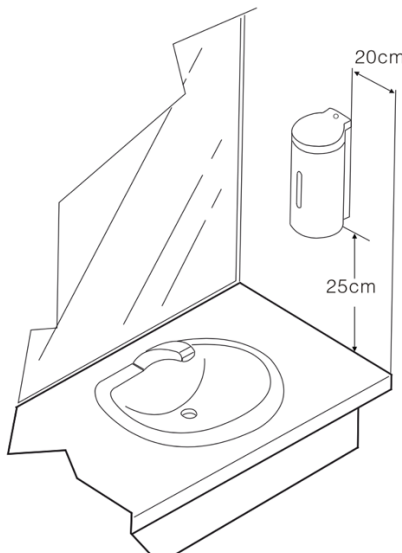


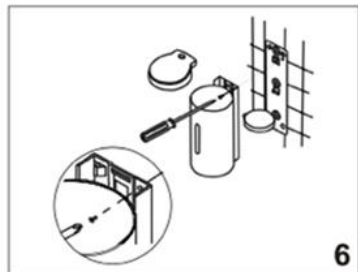
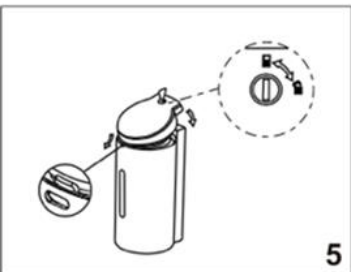
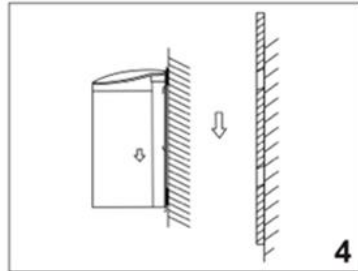
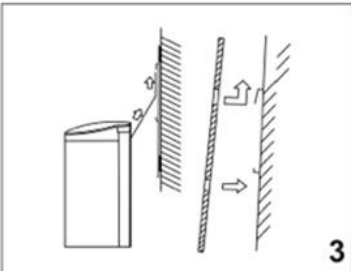
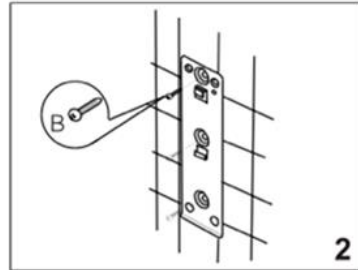
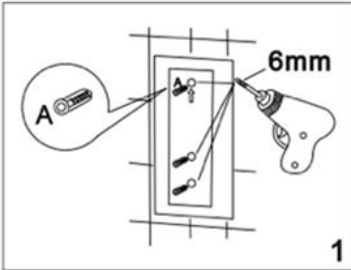
Construction / Installation Diagram

- i. Using the supplied black plastic key, open & remove the upper cover.
- ii. Disconnect the battery power and remove the battery holder
- iii. Using a Philips screw driver remove the upper right-hand Phillips screw and remove the steel wall mount plate (wall build-up frame).
- iv. Use the steel plate as a guide, mark where holes need to be drilled. Important: Make sure bracket and case unit is mounted level.
- v. When installing onto a concrete wall, drill holes 30 mm deep using a 6 mm masonry drill bit. Insert wall anchors into the holes and mount the plate using the screws.
- vi. Slide & assemble the dispenser onto the plate tongues, ensuring the dispenser is secured by the two tongues.



- vii. Remove the white plastic cap & fill the soap cartridge with soap. Do not overfill the soap cartridge to the top the cap.
- viii. Assemble back the battery holder and tighten the holder onto the upper cover.
- ix. Connect the battery power cable.
- x. Place & close the upper cover onto the dispenser.
- xi. Remove the white sensor film from underneath the sensor.







Operations

As the user's hands enter below the beam's effective range (5 – 15 cm), the beam is reflected back into the sensor receiver and activates the solenoid valve allowing a single soap application to flow from the dispenser.





Soap Volume Adjustment

No adjustments are required for most settings. Factory default soap volume is 1 ml. The factory setting should be satisfactory for most installations.

To invoke the volume adjustment, press the button below the dispenser and hold it until the LED starts flashing slowly, about five seconds. Press the button again and hold until the LED flashes for approximately 5 seconds and flashing continuously.

Place a medium target such as small card board under the dispenser nozzle until the desired volume has been reached. Remove the target to complete setup.



Soap Dispensing Range Adjustments

No adjustments are required for most settings. Factory default range is set at 1 cm. The factory setting should be satisfactory for most installations.

To invoke the sensing range adjustment, press the button below the dispenser and hold it until the LED starts flashing slowly, about five seconds. Press the button again and hold for 5 seconds until the LED flashes continuously.

Place a medium target such as small card board below the sensor eye at the desired range until the LED stops flashing. Remove the target to complete setup.



Battery Replacement

The sensor LED will flash continuously & rapidly to indicate low battery power.

- i. Using the supplied black plastic key, open & remove the upper cover.
- ii. Disconnect the battery power and remove the battery holder.
- iii. To remove the battery holder, unfasten the two Phillips screw from the upper cover.
- iv. Remove the 6 AA size batteries and replace with new AA batteries.
- v. Place back the holder and securely tighten the two Phillips screws
- vi. Assemble back & close the upper cover.



Troubleshooting

1. Unit does not operate
 - i. Check battery. Remove & replace 3 AA size batteries.
2. Soap does not dispense
 - i. Soap bottle needs refill. Refill soap.
 - ii. Check soap dispensing nozzle for clog. Clean nozzle with soft cloth.



Care & Cleaning

DO NOT USE abrasive or chemical cleaners (including chlorine bleach) to clean dispenser that may dull the luster and attack the special decorative finishes. Use ONLY mild soap and water, then wipe dry with clean cloth or towel. While cleaning the bathroom tile, protect the dispenser from any splattering of cleaner. Acids and cleaning fluids will discolor or remove decorative finish.



Resources



For Installation guides, visit our resource page through the QR code.

Alternatively, you can visit our resource page at <https://faucetscanada.ca/resources/>



To view more products from Faucets Canada, visit our shop page through the QR code.

Alternatively, you can visit our shop page at <https://faucetscanada.ca/shop/>

Warranty Information



For information on product warranty, visit our resource page through the QR code.

Alternatively, you can visit our warranty claims page at <https://faucetscanada.ca/warranty-claim/>



About us

Here at FCI, our main goal is to break the eco-innovation boundary and provide customers with fixtures that save water and deliver reliable sources of sanitation every time.

As Canada's favourite automatic faucet brand, we are proud to say we deliver quality touchless fixtures that perform beyond expectations and exceed design standards.

To learn more about Faucets Canada, please visit our website at FaucetsCanada.ca