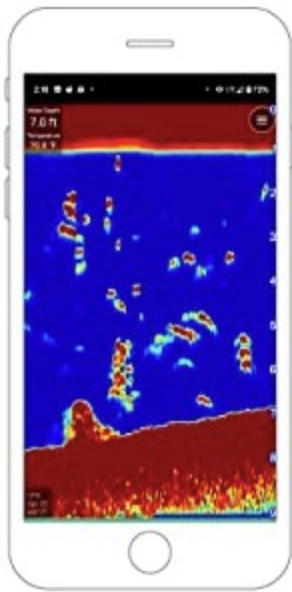




Garmin STRIKER Cast
Castable Sonar Device – Without GPS



SONAR MADE SIMPLE

Easy-to-use STRIKER Cast device streams and displays sonar on a simple phone app interface. Setup is a snap. And scans of fish and structure locations are easy to interpret.



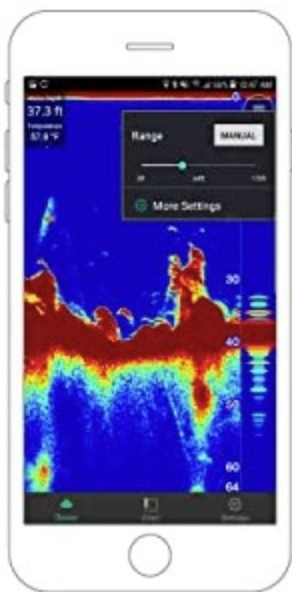
THREE STEPS TO START

Download the free STRIKER Cast app for your compatible smart devices. Pair it with the STRIKER Cast sonar unit. Now go fishing.



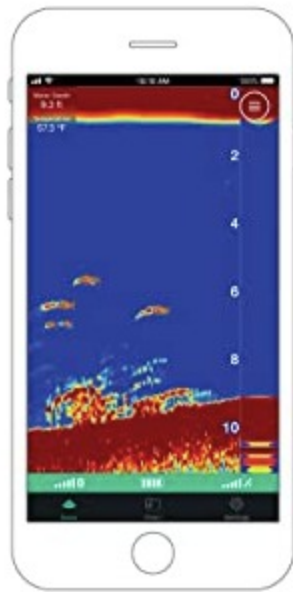
ANY WATER WILL DO

STRIKER Cast sonar works in freshwater or saltwater (and even for ice fishing) to show you fish and structure in crisp detail. You can use it to check water temperature as well.



SONAR MODES

Select from easy-to-interpret traditional 2-D sonar and ice fishing flasher modes, with setting adjustments for gain, range and more.



FISH ICONS

To make using sonar even simpler, turn on fish icons to view graphic images of fish targets and their depth readings, so you'll know exactly where to drop your line.



QUICKDRAW COMMUNITY

Access to the online Garmin Quickdraw Community lets you download 1' contour maps, so you can remember where you found the best fishing spots.



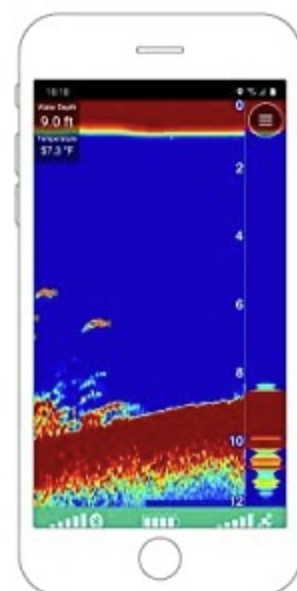
RUGGED BY DESIGN

This durable, lightweight sonar device is built to last and easy to cast, using a 20 lb test weight or higher fishing line. It's also water-resistant to IPX6 and IPX7 standards.



POWER SAVVY

To conserve battery life, STRIKER Cast automatically powers on when it's floating in water — and turns off when it's not.



EXTENDED BATTERY LIFE

How long can you fish? The internal, USB-rechargeable battery lets you go for more than 10 hours between charges. (Battery life may vary depending on usage.)

