



RAZER KISHI FOR iPhone

MASTER GUIDE

Bring your A-game anytime, anywhere. Introducing a universal gaming controller that fits most iOS devices, designed to bring console-level control to your mobile gaming. With this controller by your side, wherever you go, victory will follow.

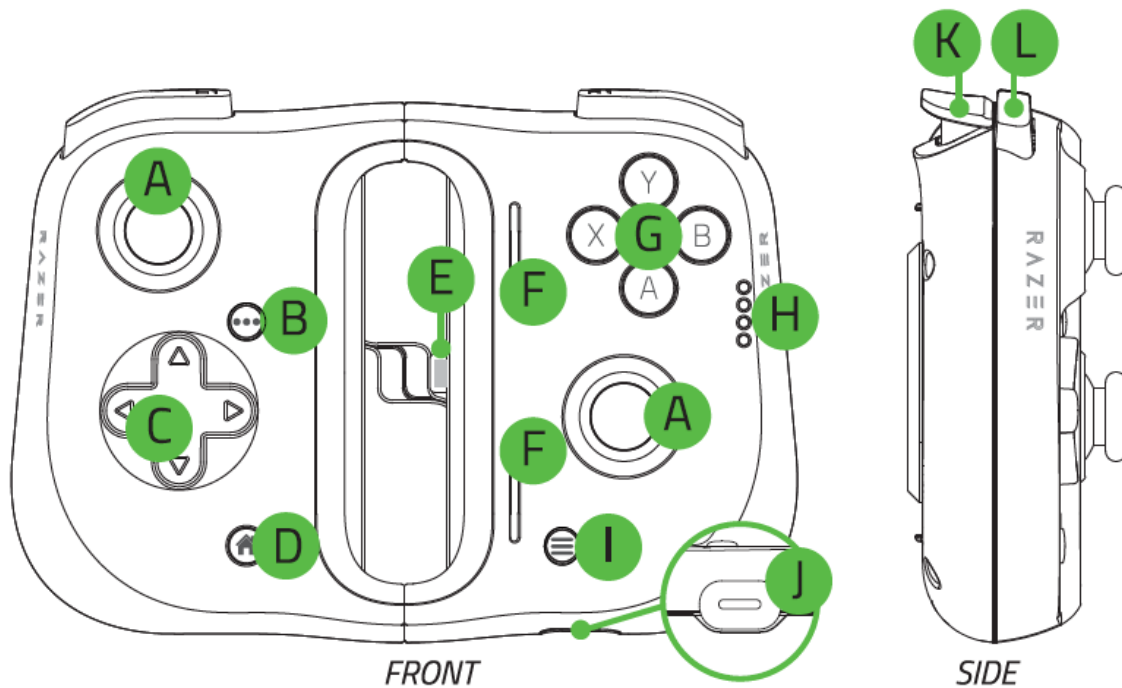
CONTENTS

1. WHAT'S INSIDE / WHAT'S NEEDED.....	3
2. LET'S GET YOU COVERED.....	5
3. GETTING STARTED.....	6
4. SAFETY AND MAINTENANCE.....	12
5. LEGALESE.....	13

1. WHAT'S INSIDE / WHAT'S NEEDED

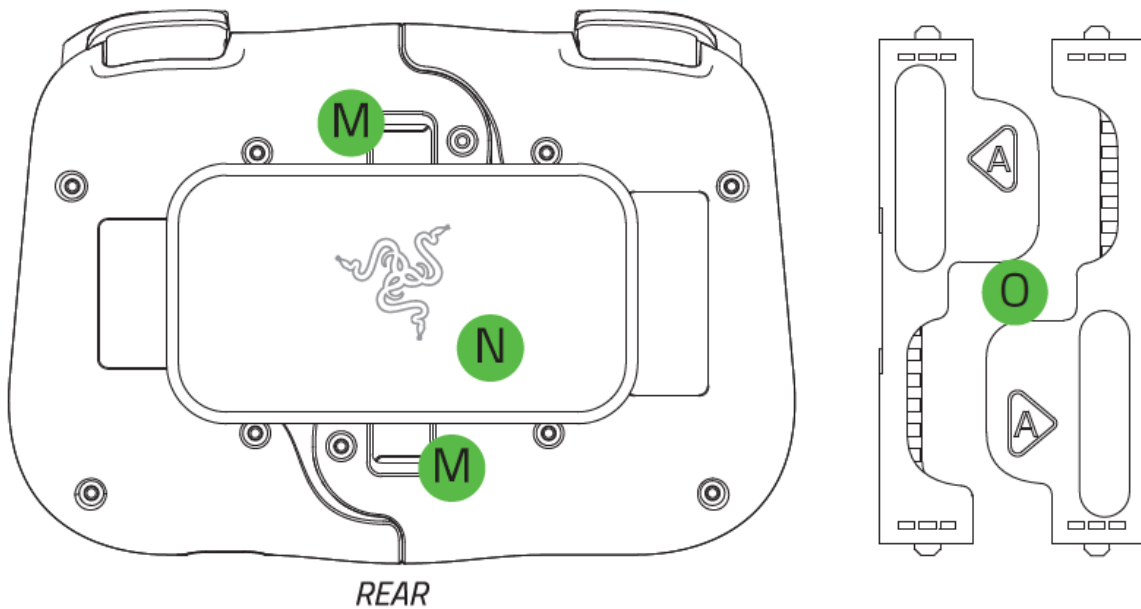
WHAT'S INSIDE

- Razer Kishi for iPhone



- | | |
|--|----------------------------|
| A. Clickable analog thumbsticks | G. Face buttons |
| B. Options button | H. Status indicator |
| C. 8-way D-pad | I. Menu button |
| D. Home button | J. Lightning port* |
| E. Lightning connector | K. Triggers (L2/R2) |
| F. Speaker ports | L. Bumpers (L1/R1) |

**Only supports pass-through charging. Lightning headphones and other accessories are not supported.*



- M.** Release latches
- N.** Retaining plate
- O.** Interchangeable rubber grips**

***Rubber Grips B are pre-installed with the controller.*

- Important Product Information Guide

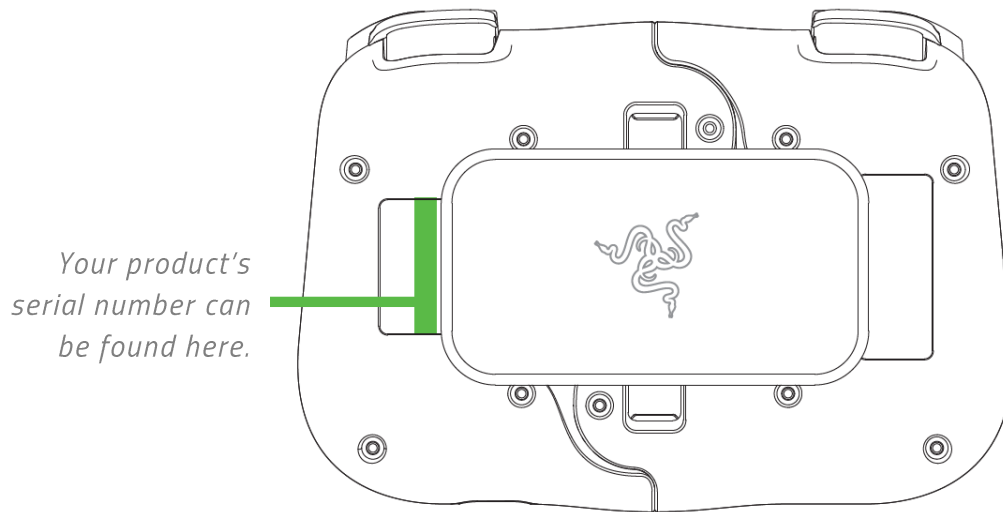
WHAT'S NEEDED

- iOS 9 (or higher)*
- Internet connection for app installation

**Compatible with iPhone XR, iPhone XS, iPhone XS Max, iPhone 11, iPhone 11 Pro, and iPhone 11 Pro Max.*

2. LET'S GET YOU COVERED

You've got a great device in your hands, complete with a 1-year limited warranty coverage. Now maximize its potential and score exclusive Razer benefits by registering at razerid.razer.com

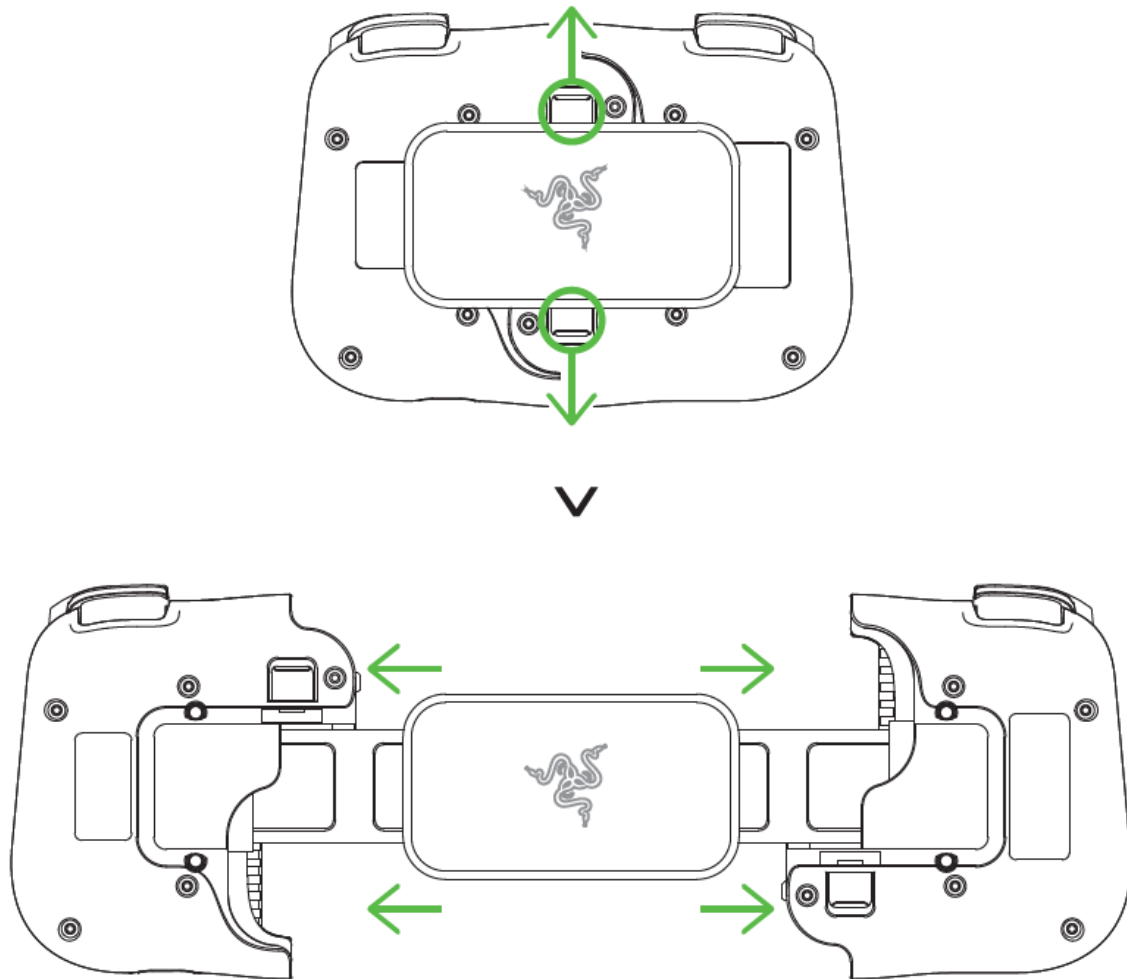


Got a question? Ask the Razer Support Team at support.razer.com

3. GETTING STARTED

EXPANDING YOUR CONTROLLER

Pull both of the release latches to unlock and remove the controller's retaining plate.



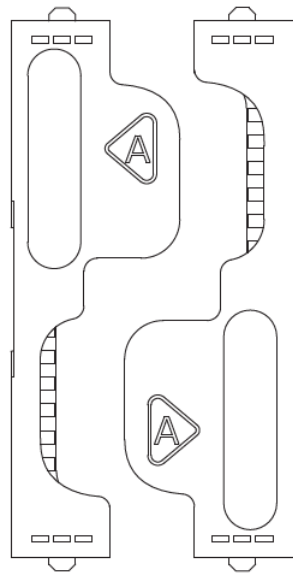
CHANGING THE RUBBER GRIPS

Depending on which phone you're using, you may need to change the attached rubber grips with the extra pair included in the package to make sure your phone fits snugly into the controller.

i *By default, the controllers come with Rubber Grips B installed.*

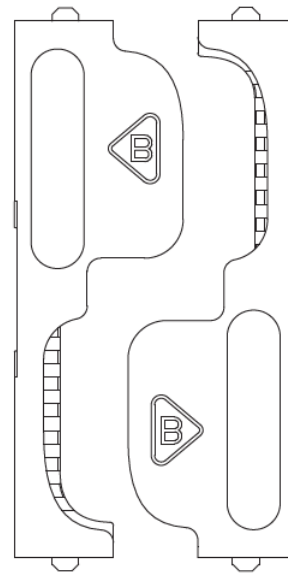
Rubber Grips A

iPhone XS
iPhone 11 Pro



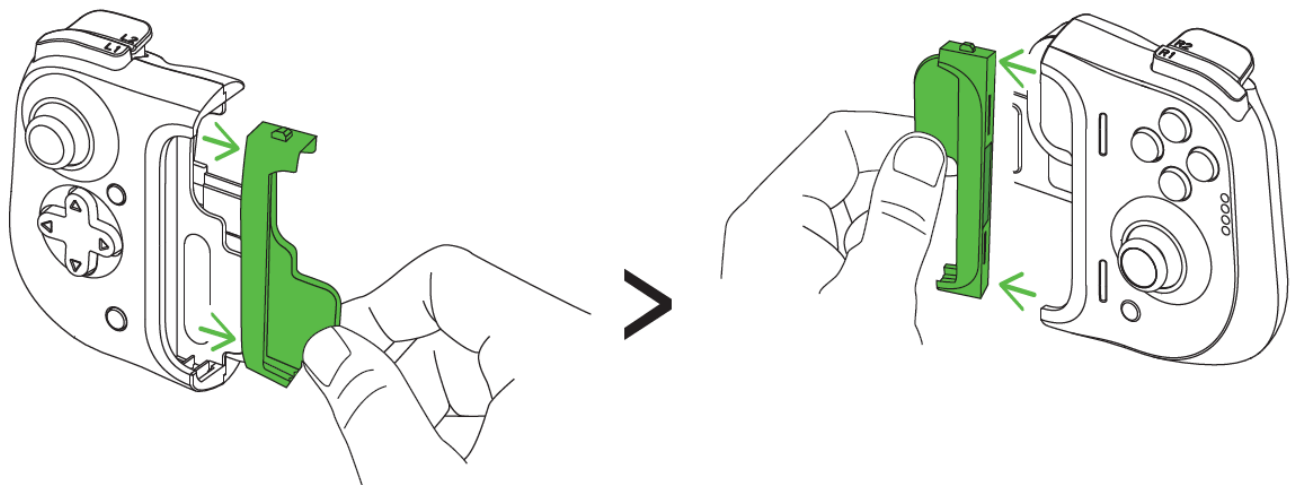
Rubber Grips B (Pre-installed)

iPhone XR
iPhone XS Max
iPhone 11
iPhone 11 Pro Max



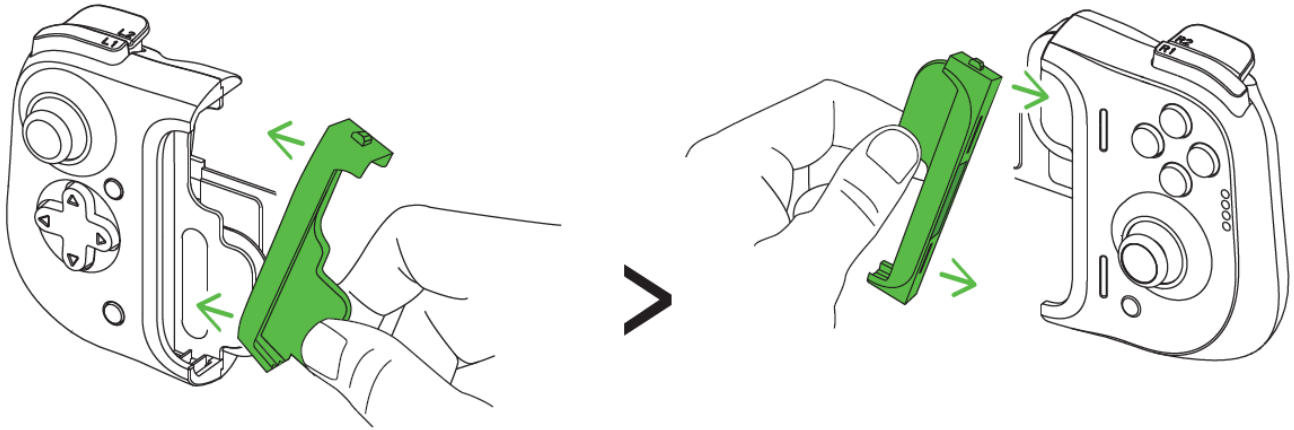
Removal

Gently pull on an attached rubber grip until you can fully remove it from the controller. Repeat for the other rubber grip.



Installation

Firmly insert the upper portion of a rubber grip and then its remaining portion until fully inserted into the controller. Repeat for the other rubber grip.



INSTALLING YOUR PHONE

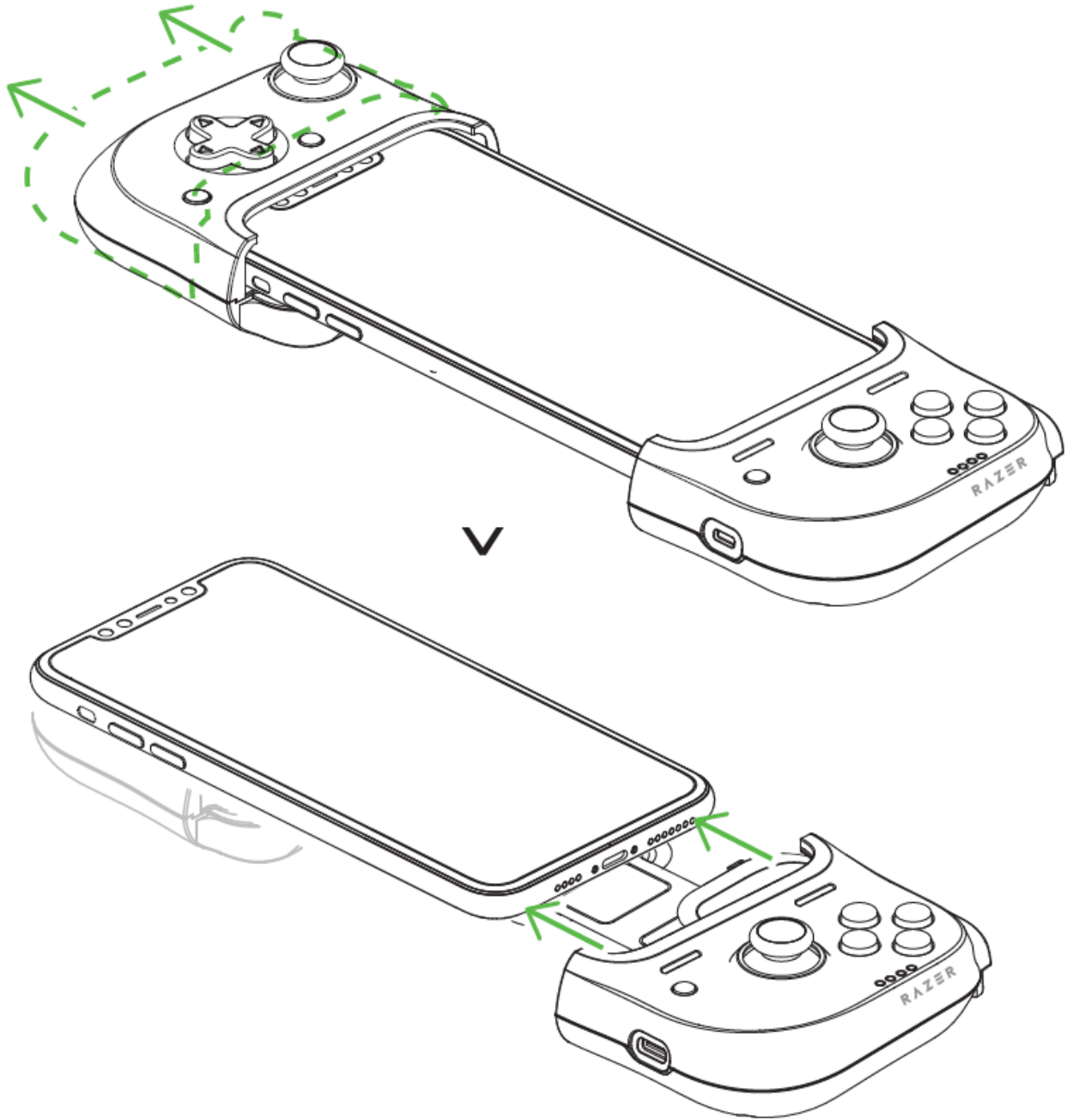
Connect your phone's Lightning port to the controller's Lightning connector and gently pull the left side of the controller to cover the remaining side of your phone. An LED on the status indicator will briefly light up in red to indicate that the controller is ready to use.



Only supports pass-through charging

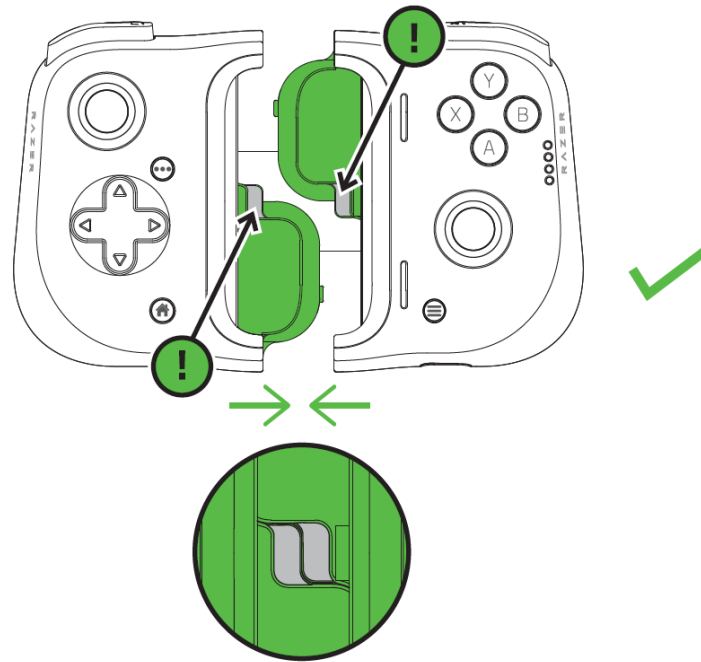
DETACHING YOUR PHONE

Firmly hold the right side of the controller and gently pull its left side to detach your phone.

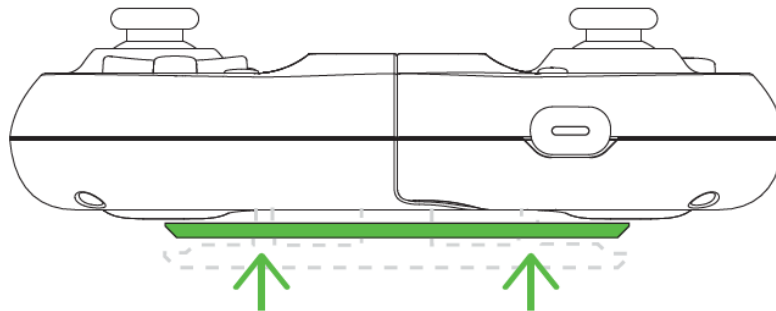


COLLAPSING YOUR CONTROLLER

When not in use, you can collapse the controller by bringing its two sides together; making sure that the both tabs are in the middle.



You may then gently press the retaining plate at the back until it snaps both sides in place.



DOWNLOAD THE RAZER KISHI APP

Enhance your Razer Kishi controller experience by upgrading it to the latest firmware.

4. SAFETY AND MAINTENANCE

SAFETY GUIDELINES

In order to achieve maximum safety while using your Razer Kishi for iPhone, we suggest that you adopt the following guidelines:

Should you have trouble operating the device properly and troubleshooting does not work, make sure to unplug the device (if applicable) and contact the Razer hotline or go to support.razer.com for support.

Your phone should slide in and fit snugly into the device. Should you have trouble attaching your phone to the device, check if you're correctly sliding your phone's Lightning port into the allotted Lightning connector or if you're using the correct rubber grips for your phone. Don't forcefully jam your phone into the controller.

Don't take apart the device (doing so will void your warranty) and don't attempt to operate it under abnormal current loads.

Keep the device away from liquid, humidity or moisture. Operate the device only within the specific temperature range of 0°C (32°F) to 40°C (104°F). Should the temperature exceed this range, unplug and/or switch off the device in order to let the temperature stabilize to an optimal level.

MAINTENANCE AND USE

The Razer Kishi for iPhone requires minimum maintenance to keep it in optimum condition. Once a month, we recommend you detach your phone from the device, and gently clean the device using a soft cloth or cotton swab to prevent dirt buildup.