



JLAB AUDIO  
JBUDS AIR EXEC  
EARBUDS

# We love that you are rocking JLab Audio! We take pride in our products and fully stand behind them.



## YOUR SATISFACTION IS GUARANTEED

You may exchange or return merchandise within 30 days of the purchase date. Please return the item to the location you purchased it. If your item has been opened or used, restrictions may apply.



## YOUR WARRANTY

You may register your product at [jlabaudio.com/register](http://jlabaudio.com/register). All warranty claims are subject to JLab Audio authorization and at our sole discretion. Retain your proof of purchase to ensure warranty coverage.

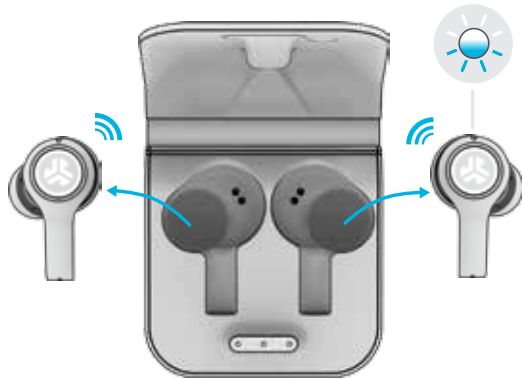


## CONTACT US

Reach out to us at [support@jlabaudio.com](mailto:support@jlabaudio.com) or visit [jlabaudio.com/contact](http://jlabaudio.com/contact).

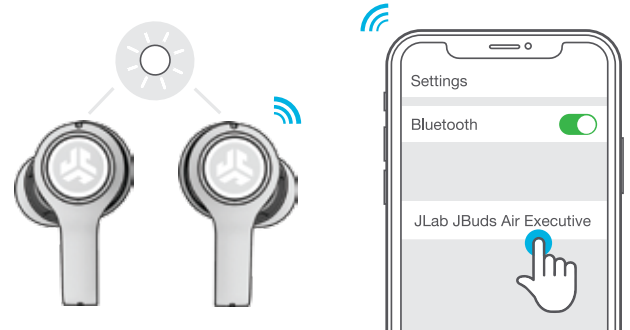
## FIRST TIME SETUP

- AUTO-CONNECTING EARBUDS**
  - Take earbuds out of the charging case and remove stickers.
  - Place earbuds back in the charging case.
  - Remove earbuds and they will auto power on.  
(Right earbud blinks blue/white indicating ready to pair to your device.)



- CONNECTING TO BLUETOOTH**

Select "JLab JBuds Air Executive" in your device settings. Voice prompt "Bluetooth connected" followed by **solid white lights** will indicate you are connected.

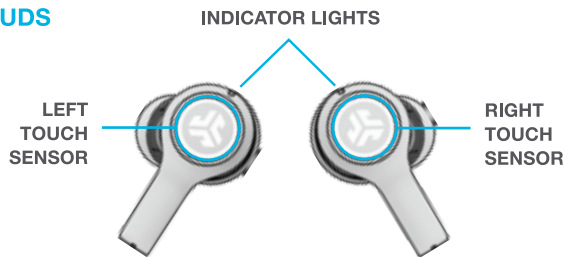


### PAIRING NEW / ADDITIONAL BLUETOOTH DEVICES:

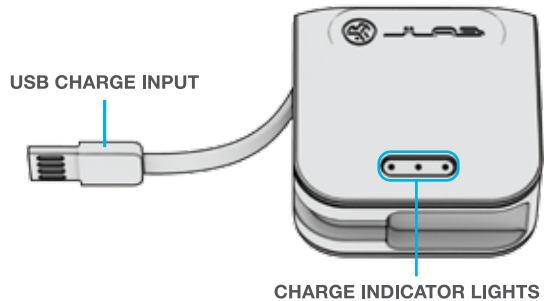
Turn OFF Bluetooth from any previously connected device. Turn ON Bluetooth from new device. Repeat **FIRST TIME SETUP**.

## IN THE BOX

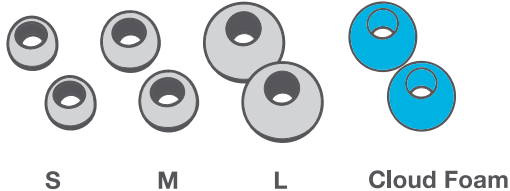
### EARBUDS



### CHARGING CASE



### EARTIPS



## BUTTON FUNCTIONS



LEFT  
EARBUD

RIGHT  
EARBUD

**VOLUME DOWN:** Single tap.

**SIRI (iOS) or "OK GOOGLE" (ANDROID):** Double tap.

**TRACK BACK:** Press & hold 1+ sec.

**TURN ON / OFF:** Press & hold 5+ sec.

**EQ CHANGE:** Triple tap.  
(JBuds Air Exec will cycle 3 EQ settings)

**VOLUME UP:** Single tap.

**ANSWER:** Single tap.

**HANGUP:** Double tap.

**REJECT INCOMING CALLS:**

Press & hold 1+ sec.

**PLAY / PAUSE:** Double tap.

**TRACK FORWARD:** Press & hold 1+ sec.

**TURN ON / OFF:** Press & hold 5+ sec.

**BE AWARE ON / OFF:** Triple tap.

## VOICE PROMPTS

**"Hello":** Power ON

**"Earbuds joined":**

Earbuds paired to each other

**"Ready to Pair":** JBuds Air Exec are ready to pair to Bluetooth device

**"Bluetooth Connected":**

Earbud is connected to device

**"Battery Full":** 100-75%

**"Battery Medium":** 75-25%

**"Low Battery":** Less than 25%  
When power decreases to 10%,  
"Low Battery" will play

**"Goodbye":** Power OFF

## EQUALIZER MODES

Triple tap left earbud for different EQ settings. Voice prompts will indicate EQ settings (JBuds Air Exec will cycle 3 EQ settings)



**JLab SIGNATURE**  
JLab C3™ signature  
sound with amplified  
bass and vocals



**BALANCED**  
Even sound with  
no additional  
enhancements

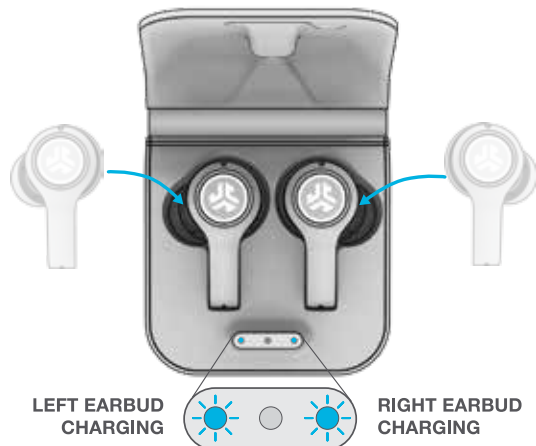


**BASS BOOST**  
Amplified bass  
and sub-bass

## CHARGING EARBUDS

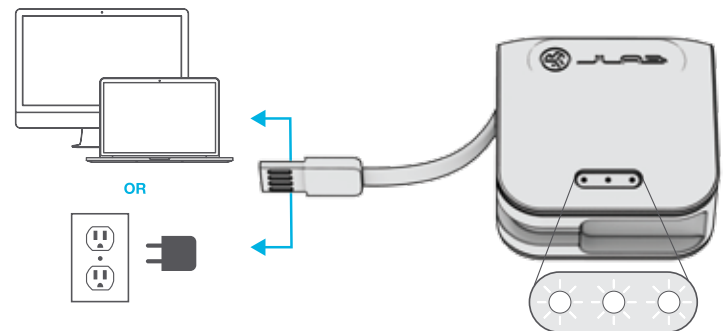
Placing the earbuds in the charging case will power off earbuds and start charging.

**Blue lights** indicate earbuds are charging and will turn off when fully charged.



## CHARGING CASE

Connect the JBuds Air Executive to computer or USB 5V 1A (or less) output device.

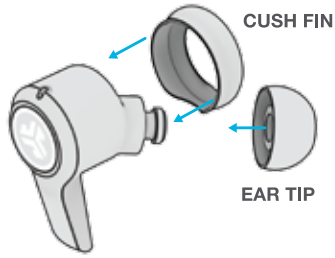


Lights **pulse white** when charging and **turn solid white** when fully charged.

## FITTING

Try the optional Cush Fins and all ear tips for best fit and proper seal.

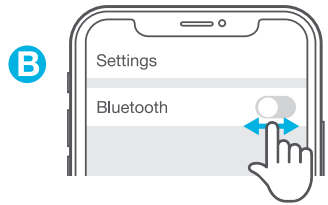
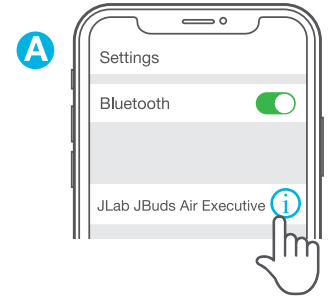
Place the earbud in the ear canal and slightly rotate to adjust for best fit.



## TROUBLESHOOTING

### NO AUDIO IN LEFT EARBUD OR EARBUDS DISCONNECT TO EACH OTHER (MANUAL RESET)

- 1 Enter your Bluetooth device settings and forget the JBuds Air Executive. Fig. **A**
- 2 Take out ONE earbud from the charging case and quickly tap the touch sensor 7x times. Blue light will blink then turn off. Once off, put back in the charging case. Fig. **C**
- 3 Repeat with other earbud. Take out and quickly tap the touch sensor 7x times. Blue light will blink then turn off. Then put back in the charging case. Fig. **C**
- 4 Put the earbuds back in the charging case. Follow FIRST TIME SETUP to repair your device.



### BLUETOOTH DEVICE DOES NOT CONNECT/RECONNECT

- 1 Enter your Bluetooth device settings and forget the JBuds Air Executive. Fig. **A**
- 2 Turn OFF then ON Bluetooth. Fig. **B**
- 3 Repeat FIRST TIME SETUP.

## QUICK TIPS

- Fully dry off the earbuds before putting in the charging case to avoid any damage to the case. The earbuds are sweat/water resistant but the case is not.
- The Bluetooth connection is established from the right earbud. For the most stable connection, keep the device near right hand side or in right pocket.
- If you prefer to wear only one earbud, you must wear the right earbud.

## WARNING

**Fully dry off the earbuds before placing in the charging case.**

If the earbuds are damp or wet, this will cause damage to the charging case. The warranty will be voided if the charging case shows damage by water/sweat.



## WARM-UP YOUR HEADPHONES

Optional: Burn-in is the process for exercising new audio equipment. We recommend 40 hours of burn-in time for most headphones to reach optimal performance. The main purpose of the process is to loosen the diaphragm of a newly crafted headphone and to stress the headphone driver. Normal, everyday use can also burn-in the headphones though JLab's proprietary burn-in provides an ideal mix of sounds and frequency sweeps to achieve this.

 Burn-in your audio equipment with the JLab Audio app available on the App Store and Google Play. Or access the burn-in method at: [jlabaudio.com/burnin](http://jlabaudio.com/burnin)

## CAUTIONS

- Avoid extreme heat, cold, and humidity.
- Avoid dropping or crushing the earbuds.
- Wax may build up in the earbud tips, lowering the sound quality. Carefully remove the wax with a cotton swab or other small tool to improve the sound quality.
- If you experience discomfort or pain, try lowering the volume or discontinuing use temporarily.
- If you experience regular discomfort while using this product, discontinue use and consult your physician.
- We recommend you treat your earbuds as you would a nice pair of sunglasses and keep them in safe location when not in use.