



USER'S MANUAL AIR COOLER AND HEATER EP2366

READ INSTRUCTIONS CAREFULLY TO AVOID ANY DAMAGE. PLEASE CONTACT CUSTOMER SERVICE FOR ANY QUESTIONS.

Please give us a chance to make it right and do better!
Contact our friendly customer service department for help first.
Replacements for missing or damaged parts will be shipped ASAP!

Follow Costway
Visit us: www.costway.com

DISSECTION

- 1. Turn on the power supply for air cooler and heater.
- 2. Push on the remote control buttons to ensure safety and reliability.
- 3. Before use, read the instructions carefully, working them for better reference.



PERFORMANCE PARAMETERS

Model	Rated Power	Working mode power	Pin mode power	Max Water	Specification
EP2366	130 (120V, 60Hz)	100W	75W	5L	18 (24.5x14.5x21.5)

FUNCTIONS

- 1. Principle of cool function: cold water flows from the water tank to pump or synchronous motor, after cooling the fan, the cool water will flow through the wetted pad, then the air will be cooled and all through the wetted pad to produce cool effect. Use the water continuously.
- 2. Safety: based on PTC heater, high efficiency of conversion between electricity and heat, rapid heating.
- 3. Electric safety: electrical safety and durable, electrical appliances.
- 4. Adjustable speed and mode: has three speeds and modes, three air modes, eight fan speeds.
- 5. Cool function: adopt an actual refrigeration and air handling technology, can use the refrigeration from air to cool the room, reduce the humidity, decrease the energy.
- 6. Safety: built-in safety protection for generating operation.
- 7. Outdoor wind at high speed: using the motor automatically, after wind at high speed, the fan will stop and the motor will stop.
- 8. High-speed remote control: 2-in-1 for remote control, control of 40 channels, 800KHz.
- 9. Smart: remote control operating the electronic keypad, use conveniently.

USE OF THE REMOTE CONTROL

This is a remote control for a portable heater of heating used, it can operate both cool and the water suspension before the environmental temperature.

Using methods

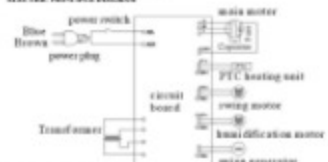
- 1. Add water to the water tank (see the water tank) and put it inside refrigerator to make sure that it is cold.
- 2. Open the device, put the device on a flat surface, make sure the water tank is in the correct position.
- 3. Turn the device on, make sure the device is in the correct position.

CAUTION

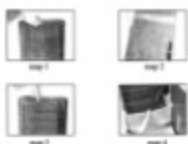
1. Use as per the rating voltage.
2. Please open or close the appliance by yourself, it should be operated by the appliance.
3. Do not open the appliance with wet hands, in order to avoid damage.
4. If the remote control is damaged, it must be replaced by the manufacturer, its service agent or similarly qualified person in order to avoid accident.
5. When the appliance is not in use, switch it off and unplug it.
6. Do not touch the device with wet hands and avoid water to avoid damage.
7. Do not use the appliance near explosive and combustible gas. Avoid long-term direct solar radiation.
8. Use the appliance only over the surface.
9. Do not use candles.
10. The level of water tank should not exceed "MAX" scale at any time, when boiling, the level of water tank should be below "MIN" scale.
11. After adding water to the water tank, do not fill or touch over it when you put it down. If you want to reuse, please plug directly from the side to make it avoid spilling.
12. Do not touch over the appliance, if it is supplied with hot water to the tank, avoid getting the power supply line. This avoid it to appear deformation or alternative service and accident.
13. WARNING: In order to avoid overheating, do not cover the appliance. Especially do not cover the PTC heater to avoid overheating.
14. Clean the appliance with a lightly damp cloth. Do not use any type of detergent or solution. Do not clean the appliance.
15. Do not make an electric and water near the wall or ceiling.
16. Do not touch or shake the body when using, otherwise it may cause stop automatically.
17. The water to tank will surely evaporate and has color in summer, please cover the water frequently.
18. This appliance is not intended for use by persons including children with reduced physical capacity or mental capabilities, or lack of experience and knowledge, unless they have been given supervision or instruction concerning use of the appliance by a person responsible for their safety.
19. Children should be supervised to ensure that they do not play with the appliance.
20. To avoid the hot caused by instability of wire, never fix the wire freely according to heated body.
21. The heater must be kept horizontally before a water outlet.
22. Do not use this appliance in the immediate surroundings of a bath, a shower or a swimming pool.
23. Do not use the air cooler and heater with a programmable timer or any other device that controls it.

14. Should it be necessary to cover the unit after the water has been added, all gently to the support. Position and adjust the bracket to secure.

ELECTRIC PRINCIPLE DIAGRAM



CLEANING AND MAINTENANCE



WARNING: Before that the fan is switched off from the supply, make sure before entering the air filter cover.

1. Clean the air filter (see map 1).
 2. Clean the power supply, pull the handle of air filter cover, remove it from appliance. Clean the air filter cover with neutral detergent and hot water. Wash it with clean water. Finally, reinstall to the appliance.
 3. Clean the wetted pad (see map 2).
- Use all the power supply when clean the air filter cover, then clean the wetted pad again. Clean the wetted pad with neutral detergent and hot water. Wash it with clean water. Finally, reinstall to the appliance.
- Attention: The wetted pad must be washed frequently, in order to avoid heating.

5. Check the water tank (see map 3).
6. Cut off the power supply, open the door, then use the water tank, clean it with neutral detergent, and wash it with clean water. Then reinstall to the appliance.
7. Check the dust.
8. Check the internal detergent and pad (see map 3).
9. After clean up all the power supply, after clean the appliance, do not have a high pressure water body. Do not have any water under the surface of covered part.

DISASSEMBLY AND MAINTENANCE

Disassembly	Causes	Solution
The device	1. Missing off or poor connection. 2. Not power the power switch at the back of body. 3. Not plug the "ON/OFF" key on the control board.	1. Plug the power cord and make sure it connects well. 2. Press the power switch at the back of body. 3. Press the "ON/OFF" key on the control board.
Four effects of delivery	1. Block the air filter cover with dust. 2. Block the air filter with paper debris.	1. Clean the air filter system. 2. Remove paper debris from the air filter.

- Reset the appliance under the situation as follows:
1. Abnormal action of service, it is handled by the above approach.
 2. Abnormal action caused by leakage of water or excess electric.

Welcome to visit our website and purchase our quality products!

Your suggestions and comments for COSTWAY are really important to us! We sincerely ask you to go back to our shop and leave a good rating or just a simple review. It would be quite encouraging if you could kindly do so for us!

Great products on sale

February 26, 2019

Great products on sale, fast delivery, nice value, and working without any issues.

WEB: your shopping (SHOP), COSTWAY will be more convenient to offer you EASY SHOPPING EXPERIENCE, GOOD PRODUCTS and EFFICIENT SERVICE!

US office: Pasadena, California

UK office: Ipswich



- Reward Points
- Exclusive Customer Service
- Personalized Recommendations
- Permanent Shopping Cart
- Order History

5 Star Rating



We would like to extend our heartfelt thanks to all of our customers for taking time to assemble this product and giving us valuable feedbacks.

