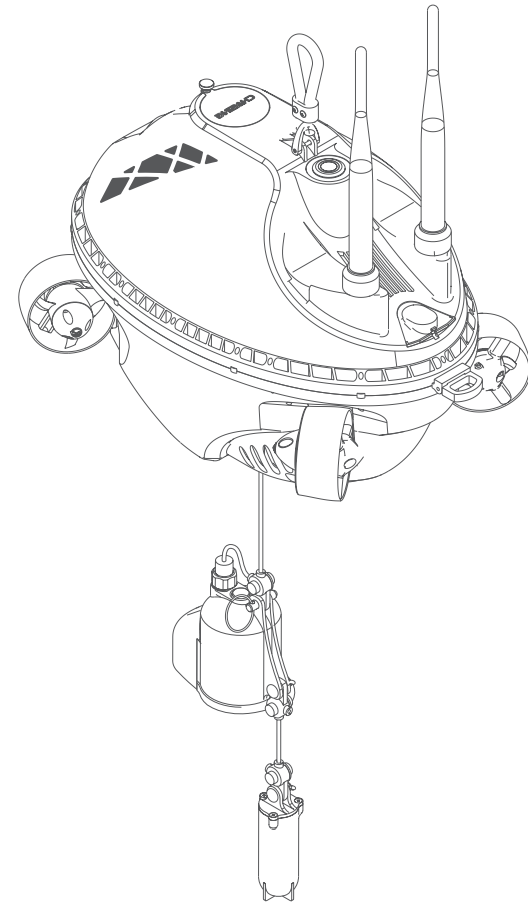


CHASING F1

User Manual

V1.1

CHASING



CHASING

Thank you for purchasing the CHASING F1 fish finder drone. Please read this entire document carefully before using the drone. By using this product, you hereby signify that you have read this disclaimer and all instructions carefully and that you understand and agree to abide by the terms and conditions herein.

Chasing accepts no liability for damage, injury, or any legal responsibility incurred directly or indirectly from the use of the CHASING F1 in the following conditions:

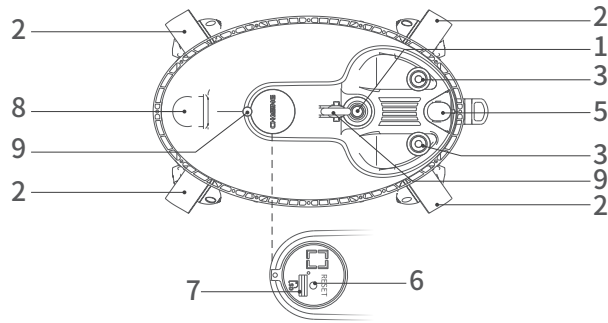
01. Damage(s) or injuries incurred when users are drunk, taking drugs, drug anesthesia, dizziness, fatigue, nausea and any other conditions no matter physically or mentally that could impair your ability.
02. Damage(s) or injuries caused by subjective intentional operations.
03. Any compensation for any damage arising out of the accident.
04. Failure to follow the guidance of the manual to assemble or operate.
05. Malfunctions caused by refit or replacement with non-Chasing accessories and parts, or unauthorized modification, disassembly, or shell opening not in accordance with official instructions.
06. Damage(s) or injuries caused by using third-party products or fake Chasing products.
07. Damage(s) or injuries caused by misoperation or subjective misjudgment.
08. Damage(s) or injuries caused by mechanical failures associated with erosion and aging.
09. Damage(s) or injuries caused by operating the unit with a low battery alert.
10. Damage(s) or injuries caused by operating the drone out of maximum safe range and depth.
11. Damage(s) or injuries caused by knowingly operating the product in abnormal conditions (such as the assembly is not completed, or the main components have obvious faults, obvious defects or missing accessories).
12. Damage(s) or injuries caused by operating the drone in a military control zone or privately-owned water areas without official permission.
13. Damage or injury caused by using in bad water conditions (such as high winds, or turbid zone).
14. Damage or injury caused by uncontrollable external factors, including severe collision, tide wave and being swallowed by animal.
15. Damage caused by infringement of any photography and video data obtained by the operator using Chasing F1.
16. Other losses that are not covered by the scope of Chasing's liability.

Chasing F1 Introduction	03
Fish Detector	03
Sonar Bracket	04
Bait Boat (optional)	04
Installation & Connection	04
Descriptions of Main Functions	06
Micro SD Card Copy	08
Video and Photo Download	08
Navigation	08
Battery Charging Guidance	09
Specifications	09
Maintenance and Safety Precautions	09

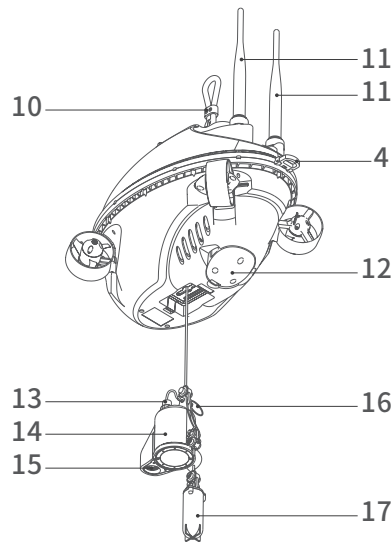
Chasing F1 Introduction

Fish Detector

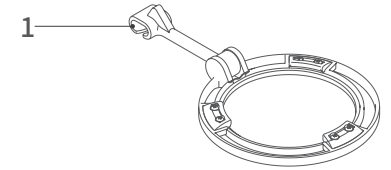
CHASING F1 is a hi-tech digital full HD fish finder drone with remote control designed for all types of fishing. It is a must-have for every angler of every skill level who desires to maximize his/her catch rate. F1 provides you with intelligent information about the underwater terrain, surroundings, other objects underneath, the location of fish masses, and the position of fish in water. In addition to fishing situations, F1 delivers both real-time water temperature readings and accurate depth readings. It has the ability to take both great quality pictures and to capture high-definition videos during the process of fishing. With built-in waterproof full HD digital stellar camera equipped with white LED and IR highlight night-vision lights, fishes can be caught in sight and video-recorded more clearly in the dark environment. F1 moves vertically and can ascend and descend automatically. The maximum operating depth of F1 is 28 meters. It is featured by four thrusters and has various functions, such as GPS, all-directional movement, suspension and stop, keeping records of multiple fishing points, automatic cruise between fishing locations and one-key return. The lithium battery is swappable and can last up to 6 hours in continuous use. Apart from the above-mentioned functionality, F1 can be also mounted with smart sonar ball, small bait boat, and other optional accessories to undertake more tasks.



1. Power button
2. Thruster
3. Antenna mounting base
4. Hanging buckle
5. Peripheral interface
6. Reset Button
(Short press to switch 2.4Ghz or 5Ghz WiFi)
7. MicroSD slot
8. Navigation light
9. Locking screw
10. Hanging ring
11. Antenna
12. Battery
13. Camera probe connector
14. Camera probe
15. IR Infrared Light
16. Quick Release Pin
17. Lead weight

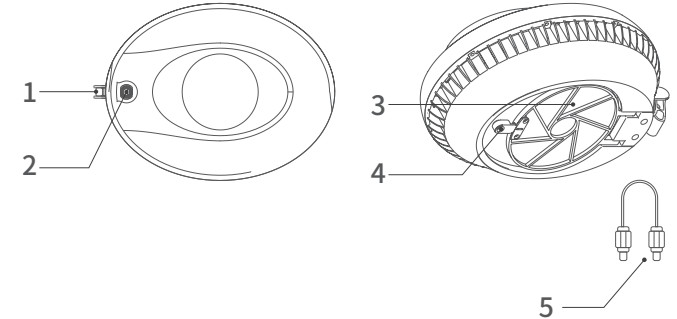


Sonar Bracket



1. Hanging buckle

Bait Boat (optional)



1. Hanging buckle
2. Connection interface
3. Baffle
4. Switch block
5. Connection cable

Installation & Connection

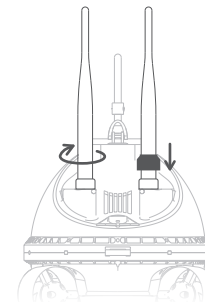
1 Download CHASING GO2 App

CHASING GO2 App :
Scan QR code or visit iOS App store / Google Play to download. (iOS 9.0 / Android 5.0 and above)



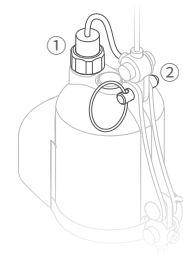
2 Install Fish Detector

- a. Install Antennas:
Screw the two antenna mounts securely on the drone and tighten them.



- b. Install Camera Probe:

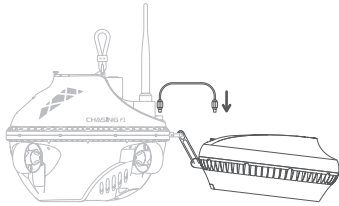
- Connect the connector of the Fish Detector to the Camera probe cable socket (shown in ①) and tighten the nut.
- Align the cable clamp of the Fish Detector with the mounting hole of the Camera probe (shown in ②), then gently push the Quick Release Pin into the hole.



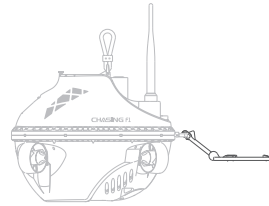
c. Connect Sonar Bracket/ Bait Boat to Fish Detector:

Connect the Bait boat to the Fish Detector. Make sure the hanging bucket and cable are in place.

Note: 1) Before installing or disassembling the Bait Boat, turn off the Fish Detector's power.

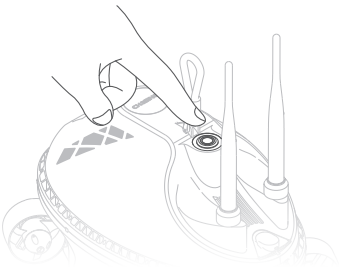


Connect the Sonar bracket to the Fish Detector. Clip the sonar hanging buckle to the Fish Detector and move it slightly to make sure it is attached and mounted properly.



3 Start the Fish Detector

To start the Fish Detector, press the power button. The power indicator lights up, and the navigation light exhibits a short flash, accompanied by two beeps sounds of self-test.



4 Wi-Fi Connection

On the smartphone/tablet, go to Wi-Fi settings. Wait for 5-10 seconds and the Chasing_xxxx network will appear as an option. Hit to connect and enter the Wi-Fi password: 12345678

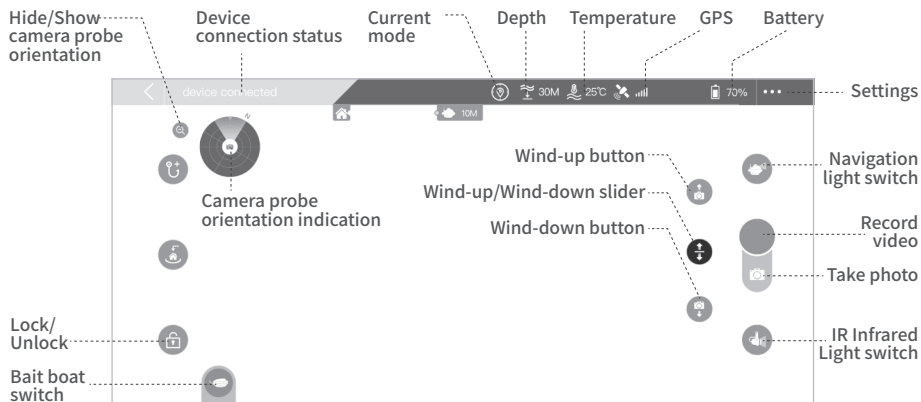


5 Registration & Login

When you launch the CHASING GO2 App for the first time, please follow the interface prompts to register an account and log in to the App. A network connection is required during the registration and login process.

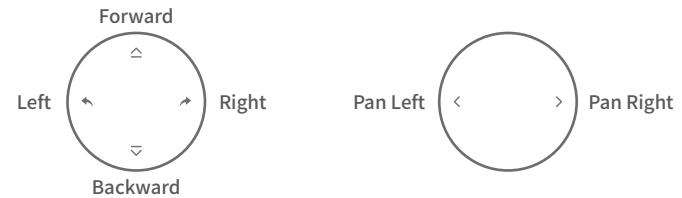
6 CHASING GO2 App Tutorial

Run the App, when you see "connected" on the bottom left corner, hit "start" on the right. Now you will see the main App interface (below).



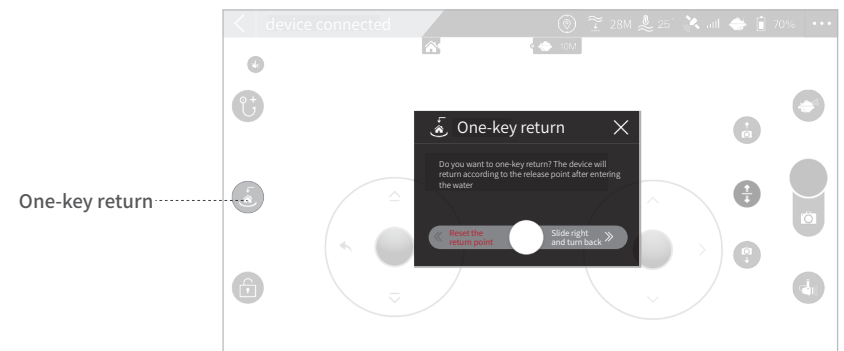
Descriptions of Main Functions

- 1 **Navigation light:** It is convenient to observe the position of the Fish Detector at night, and it also has the effect of attracting fish.
- 2 **IR Infrared Light:** Turn it on in the low light conditions or dark underwater environment for better vision.
- 3 **Picture and video:** Photos can be taken while recording.
- 4 **Ascend and Descend:**
 - Manual: The speed of the probe releasing and retracting can be controlled by adjusting the slider, more closer to the end of sides, more faster.
Ascend: Slide up and press long, release to stop; Descend: Slide down and press long, release to stop.
 - Auto: When the auto retracting and releasing button is hit, the manual icon will be changed into the speed adjustment icon, and the speed can be adjusted by sliding slider.
Ascend: Hit the probe retracting slider, hit again to stop.
Descend: Hit the probe releasing slider, hit again to stop.
- 5 **Lock/Unlock:** Hit the Lock/Unlock button to unlock the thruster and use the virtual joy stick on screen to control the Fish Detector's movement.

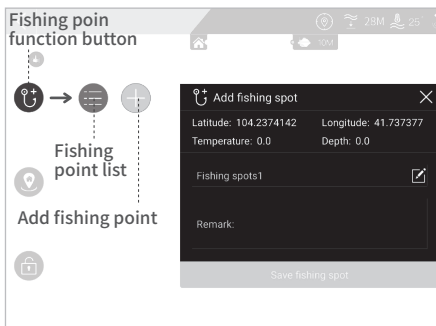


6 Fishing point and return:

- 1) Setting the return point: After unlocking, a pop-up will appear on the interface to prompt setting the return point. Hit "Confirm setting" as shown in the figure, and then set the Fish Detector's current position as return point. If you hit "Ignore", you can set the return point when the Fish Detector moves to the position where you want to return.
- 2) One-key return: If the return point has been set, hit the "one-key return button" again, Slide to the right to perform the one-key return function, and slide to the left to "reset the return point".



- 3) Add fishing point: Hit the "Fishing point Function" button. You can add fishing point here and change the name and add notes according to your personal needs.
- 4) Fishing points list: Hit to view the saved fishing points.
- 5) Go to the selected fishing point: Hit "Go Here" in the list of fishing points and the Fish Detector will head to the selected fishing point.



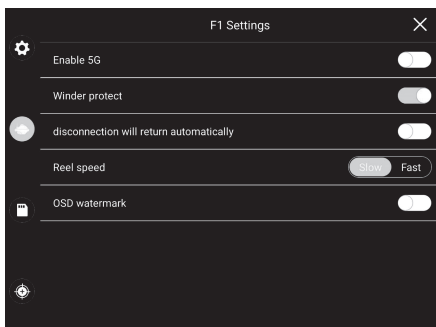
7 Settings:

Enable 5G: Switch between 2.4g and 5G WIFI bands.

Winder protection: If power is on, when the Camera probe depth does not change, it will automatically stop winding; If power is off, you need to manually winding.

Auto return if disconnected: After starting, if the Fish Detector is disconnected, it will auto return to the saved return point.

Note: If the return point is not set, auto return won't occur.

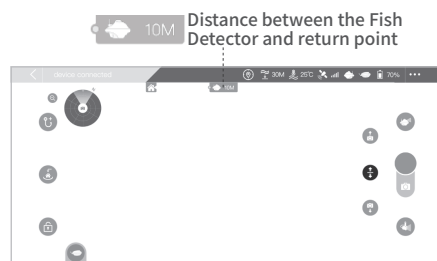


8 Low Power Protection:

When the power level of the drone is less than 10%, a low power reminder will be displayed in the upper left corner. At this time, the function is still in normal use. When the power is less than 5%, the interface popup textual box reminds the user whether the drone will turn back automatically. If you choose 'yes', the drone will turn back immediately. If you choose 'cancel', it will cancel the turn back. If you do not choose, the drone will return after 20 seconds.

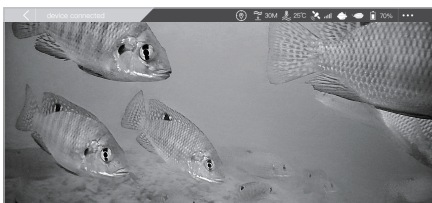
9 Distance between the Fish Detector and return point:

Once the return point has been set, the distance between the Fish Detector and return point will be displayed on the smartphone/tablet.



10 Double tap to hidden:

After unlocking, you can hide the control/function buttons by double tap the screen for better image viewing.

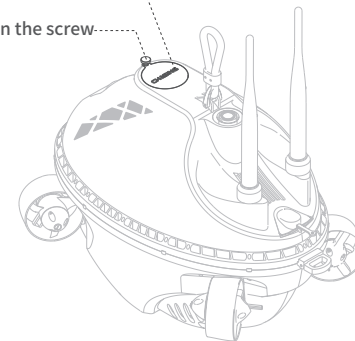


Micro SD Card Copy

- 1) ① Loosen the top screw on the Fish Detector, remove the cover plate, ② then gently press the Micro SD card to pull out.
- 2) After copying, insert the Micro SD card back into the card slot, install the cover plate and lock the screw.

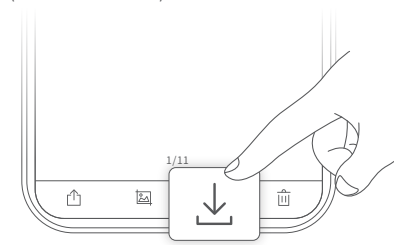
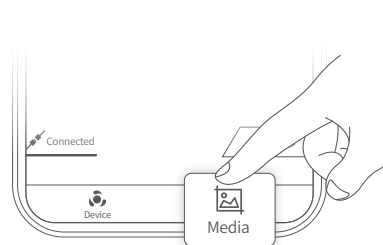
*Note: 1) Before removing or inserting the Micro SD card, turn off the Fish Detector's power and make sure the surface of the sealing plate is dry.
2) Pay attention to check whether the O-ring of card slot is dropped or damaged. If the O-ring is missing or damaged, please replace it in time.

- ① Loosen the screw
- ② Remove the cover and pull out the Micro SD card



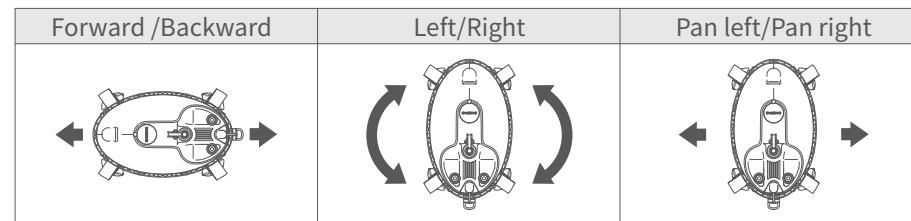
Video and Photo Download

- 1) After connecting Wi-Fi, open CHASING GO2 App, hit the Media button in the lower right corner.
- 2) Find the video/photo that you want to download. Hit the download button and the image will be saved directly to the phone/tablet's photo album (Download folder).



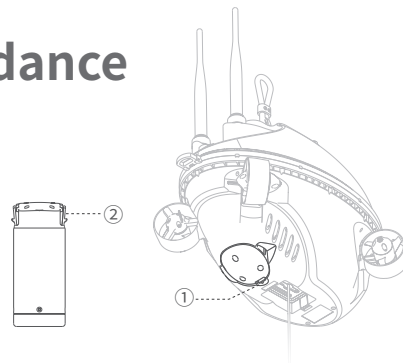
Navigation

CHASING F1 has a vector layout propulsion system with four thrusters, which can achieve multiple-freedom motion.



Battery Charging Guidance

- (1) Press the limit buckle on the bottom of the Fish Detector to remove the battery.
- (2) Connect the power cord to charge the battery. A solid red light indicates normal charging is in process. A solid green light indicates a complete charge. After charging, please unplug the power adapter.



Specifications

Fish Detector

Size(mm)	278x154x215
Weight	2KG
Max Depth	28M
Wire Length	28.5M
Working Time	4-6 Hours
Battery Cycle Times	>300 Times
Working Temperature	-10°C~45°C

Sensor

IMU	Triaxial Gyroscope Accelerometer / Compass
Depth Sensor	<±0.25m
Temperature Sensor	<±2°C
GPS	±1m

LED

IR Infrared Light	7*IR Infrared Light LED
-------------------	-------------------------

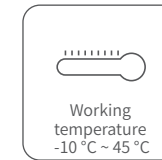
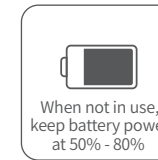
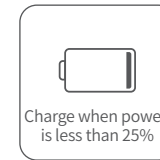
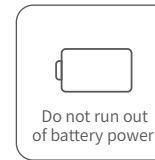
Camera

CMOS	1/2.8
Light Ring	F2.0
Focal Distance	2.7mm
ISO Range	100-102400
Viewing Angle	164.6°
Photo Maximum	Two-mega-pixel
Resolution	(1920*1080)
Photo Form	JPEG
Video Resolution	1080P@30fps
Video Maximum Bitstream	4M
Video Form	MP4
SD Card Memory	Standard 16G (maximum support 256G)

Charger

Power	2A/12.6V
Charging Time	3.5H

2 Battery Protection



3 Charging Protection

- Only use the Chasing standard adapter;
- Red light means charging;
- Green light means fully charged.

4 Thruster/ Propeller



Do not touch the Thrusters after unlocking.



Do not unlock the Thruster for more than 30 seconds in the air to avoid overheating.

5 Winding

- 1) Please pay attention to adjust the winding speed to a slow speed to avoid damage to the probe or cable.
- 2) Please stop winding if the Camera probe depth remains unchanged for more than half a second.
- 3) Please do not winding when the Fish Detector is out of water.

Other

1. Pay attention to the orientation when installing the battery to avoid violent removal and damage to the battery.
2. Before launching into the water, please check whether the connections are firm, whether the thrusters are loose, and ensure the top MicroSD waterproof sealing cover is properly installed and fastened.
3. After each use, please check whether the motor blade is entangled with aquatic plants, fishing nets and other foreign objects. Meanwhile, rinse the drone body with fresh water, dry it, air it, and then put it back into the packing box.
4. Do not bend the antenna to avoid damage
5. When not in use, the waterproof cover shall be screwed on tight to avoid corrosion of the interface.
6. Do not place heavy objects on drone or accessories to avoid possible damage.
7. Children under the age of 16 must be accompanied by an adult to use the drone.
8. When not in use, please do not expose the Fish Detector and accessories under sunlight. Store it in a cool place or in a special box.

Support

1. Any questions about our products please contact by support@chasing-innovation.com or leave a message on the Chasing Website (<https://www.chasing.com>) chatting window.
2. You can also join the OFFICAL CHASING OWNERS GROUP on Facebook for latest news, app update and other shared stories with Chasing Products worldwide.

You could have the latest user manual by the

<https://www.chasing.com>

This content is subject to change without prior notice

Maintenance and Safety Precautions

1 Navigation Safety

