

[Skip to content](#)

Manuals+

User Manuals Simplified.



tp-link AX23 AX1800 Dual-Band Wi-Fi 6 Router Installation Guide

Home » [tp-link](#) » tp-link AX23 AX1800 Dual-Band Wi-Fi 6 Router Installation Guide 



Quick Installation Guide



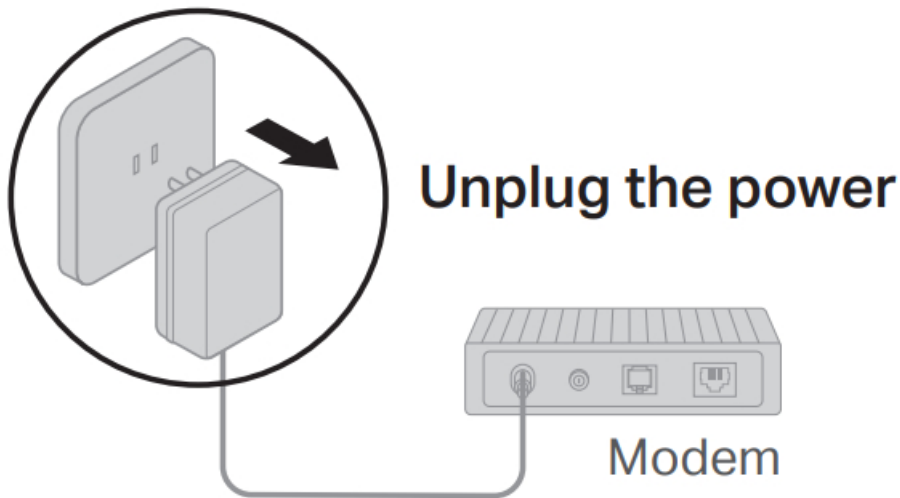
Dual-Band Wi-Fi 6 Router

Contents [[hide](#)]

- [1 Connect the Hardware](#)
- [2 Set Up the Network](#)
- [3 Button Explanation](#)
- [4 TP-Link Cloud Service](#)
- [5 Need Help?](#)
- [6 File Downloads](#)
- [7 References](#)
- [8 Related Manuals](#)

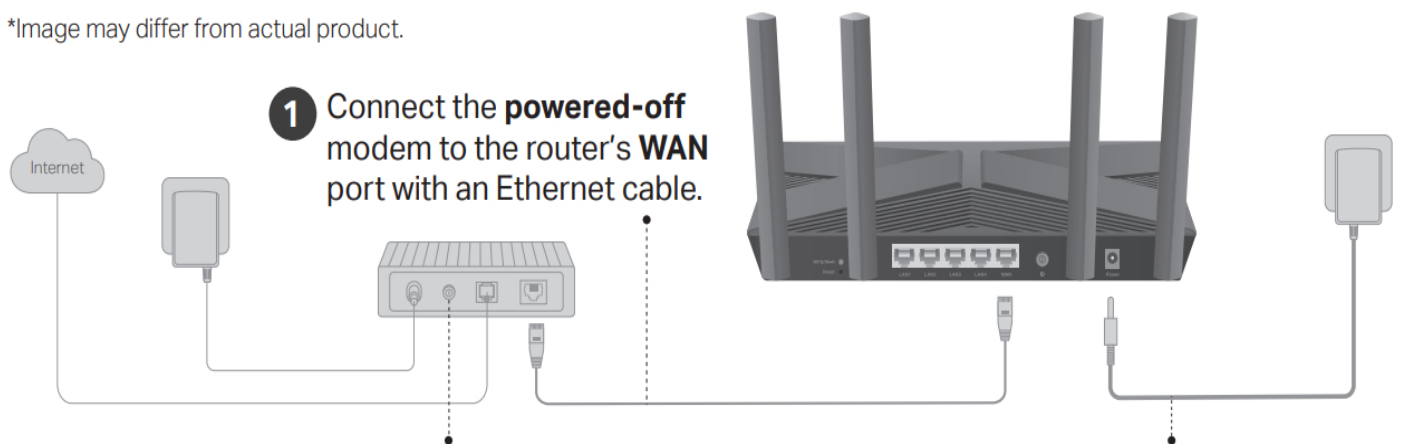
Connect the Hardware

- Unplug the power to turn off your modem, if any, and remove the backup battery if it has one.
- Place the router horizontally and orient the antennas vertically.



If your internet comes from an Ethernet outlet instead of a DSL / Cable / Satellite modem, connect the router's WAN port to it, and then follow steps 3 and 4 to complete the hardware connection.

*Image may differ from actual product.



- Power on the modem, and then wait about 2 minutes for it to restart.
- Connect the power adapter to the router and turn on the router.
- Verify that the hardware connection is correct by checking the following LEDs.

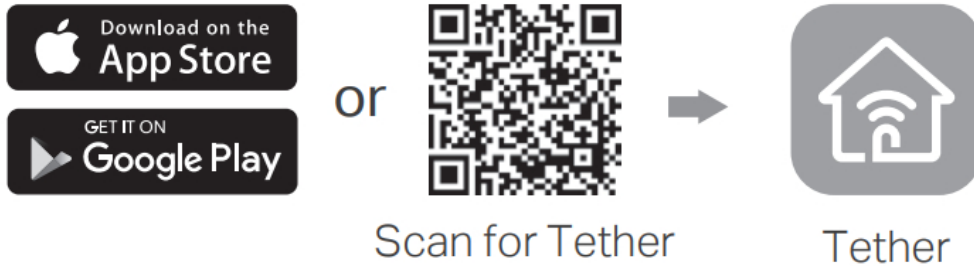


Note: If the 2.4GHz LED and 5GHz LED are off, press and hold the WPS/Wi-Fi button on the back for more than 2 seconds, then release the button. Both the LEDs should turn solid on.

Set Up the Network

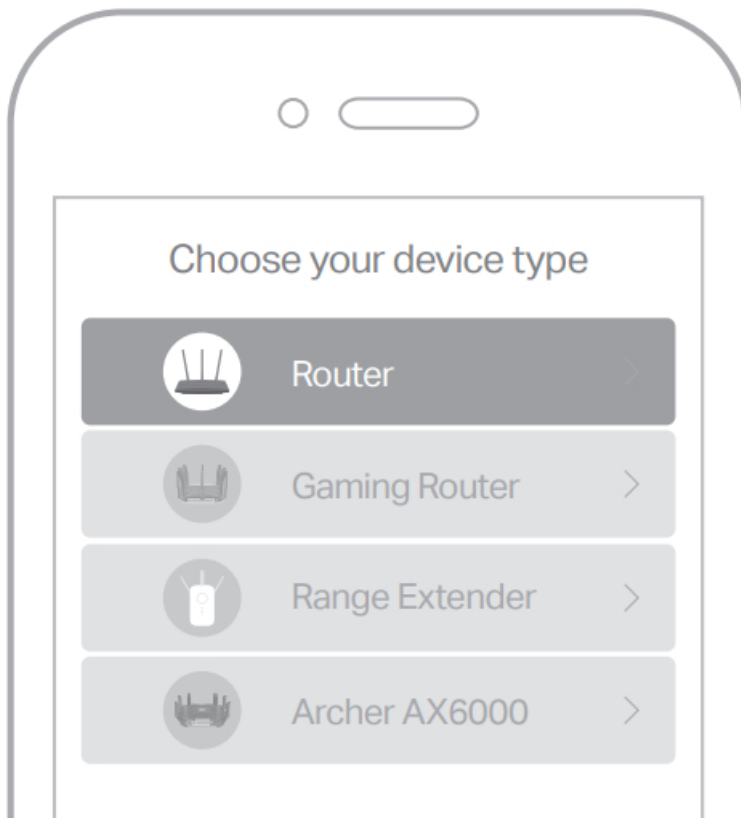
Method ONE: Via TP-Link Tether App

1. Download the Tether app.



http://www.tp-link.com/common/promos/app_tether_v2.html?ref=QRCode

2. Open the Tether app and log in with your TP-Link ID.
Note: If you don't have an account, create one first.
3. Tap the + button in the Tether app and select Router > Wireless Router. Follow the steps to complete the setup and connect to the internet.

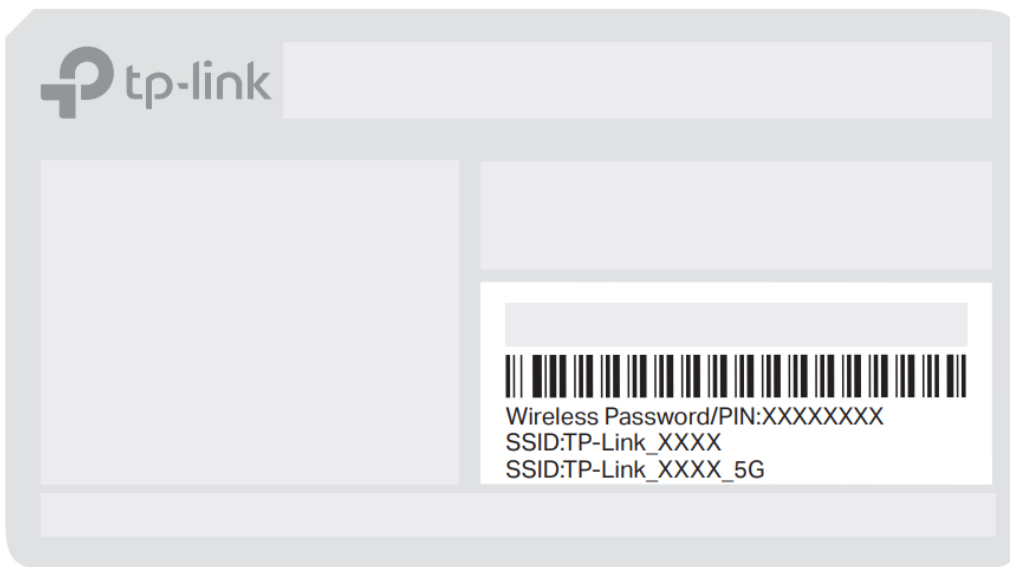


Enjoy the internet

To enjoy a more complete service from TP-Link, bind your TP-Link ID to the router.

Method TWO: Via a Web Browser

1. Connect your device to the router wirelessly or with an Ethernet cable.
The default wireless network names (SSIDs) and passwords are printed on the label at the bottom of the router.



2. Launch a web browser, and enter <http://tplinkwifi.net> or <http://192.168.0.1> in the address bar. Create a password to log in.

Note: If the login window does not appear, please refer to Q1 of Need Help? in this guide.



3. Follow the step-by-step instructions to set up the internet connection and register for the TP-Link Cloud service.

Enjoy the internet

Button Explanation

WPS/Wi-Fi Button

Press the button for 1 second, and immediately press the WPS button on your client to start the WPS process. Press and hold the button for more than 2 seconds, then release the button to turn on or off the wireless function of your router.

Reset Button

Press and hold the button for about 6 seconds until the Power LED blinks to reset the router to its factory default settings.

TP-Link Cloud Service

TP-Link Cloud service provides a better way to manage your cloud devices. You can set up and enjoy cloud functions via the Tether app or through the web management page at <http://tplinkwifi.net>

Remote Management

Easily manage your home network when you are out and about via the Tether app on your smartphone or tablet.

Timely Upgrade Notifications

Keep you informed of the latest firmware updates, ensuring that your router stays at its best.

One for All

Manage multiple TP-Link Cloud devices, all from a single TP-Link ID.



To communicate with TP-Link users or engineers, visit <https://community.tp-link.com> to join TP-Link Community.



For technical support, replacement services, user guides and more, please visit <https://www.tp-link.com/support>



Email techwriter@tp-link.com.cn to give suggestions.

- Keep the device away from water, fire, humidity, or hot environments.
- Do not attempt to disassemble, repair, or modify the device. If you need service, please contact us.
- Do not use any other chargers other than those recommended.
- Do not use a damaged charger or USB cable to charge the device.
- Do not use the device where wireless devices are not allowed.
- The adapter shall be installed near the equipment and shall be easily accessible.

Need Help?

Q1. What should I do if I can't access the web management page?

- Reboot your router and try again.
- If the computer is set to a static IP, change its settings to obtain an IP address automatically.
- Verify that <http://tplinkwifi.net> is correctly entered in the web browser. Alternatively, enter <http://192.168.0.1> or <http://192.168.1.1> in the web browser.
- Use another web browser and try again.
- Disable and enable the network adapter in use.

Q2. What should I do if I can't access the internet?

- Power off your modem for about 5 minutes, then power it on and check the internet. If your modem has more than one Ethernet port, keep other ports unconnected.
- Check if the internet is working normally by connecting a computer directly to the modem via an Ethernet cable. If it is not, contact your internet service provider.
- Log in to the web management page, and go to the Network Map page to check whether the internet IP address is valid or not. If it's valid, go to Advanced > Network > Internet, click Advanced Settings, select Use the Following DNS Addresses set the primary DNS to 8.8.8.8, and set the secondary DNS to 8.8.4.4. If it is not, check the hardware connection or contact your internet service provider. For cable modem users, log in to the web management page of the router and go to Advanced > Network > Internet > MAC Clone. Select Clone Current Device MAC and click SAVE. Then reboot both the modem and the router.

Q3. What should I do if I forget my wireless password?

- If you have not changed the default wireless password, it can be found on the label at the bottom of the router.
- Connect a computer directly to the router using an Ethernet cable. Log in to the router's web management page at <http://tplinkwifi.net>, and go to the Wireless page to retrieve or reset your wireless password.

Q4. What should I do if I forget my web management page password?

- If you are using a TP-Link ID to log in, click Forgot Password? on the login page and then follow the instructions to reset it.
- Alternatively, press and hold the Reset button on the back for about 6 seconds until the Power LED blinks. Then visit <http://tplinkwifi.net> to create a new login password.



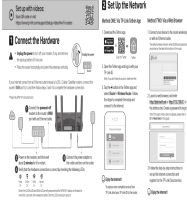
Set up with videos:

Scan QR code or visit

<https://www.tp-link.com/support/setup-video/#wi-fi-routers>



File Downloads



tp-link Installation Guide

AX23, AX10, AX1800 Dual-Band Wi-Fi 6 Router

[Download](#) [optimized]

[Download](#)

References

- [TP-Link Community](#)
- [TP-Link Product Support - Wireless Networking Equipment Support](#)
- [Support Videos | TP-Link](#)
- [Trying to configure the Router? | TP-Link](#)

Related Manuals

1. [tp-link AX1800 Dual-Band Wi-Fi 6 Router Installation Guide](#) AX1800 Dual-Band Wi-Fi 6 Router Quick Installation Guide Set up...
2. [tp-link Archer AX4400 Dual-Band Wi-Fi 6 Router Installation Guide](#) tp-link Archer AX4400 Dual-Band Wi-Fi 6 Router Installation Guide Connect...
3. [tp-link AC750 Dual Band Wi-Fi Router User Guide](#) AC750 Dual Band Wi-Fi Router 3in1: Router, Access Point, Range...
4. [tp-link Dual-Band Wi-Fi Router Instruction Manual](#) Quick Installation Guide Dual-Band Wi-Fi Router *Images may differ from...
5. [tp-link Dual Band Wi-Fi Router Owner's Manual](#) tp-link Dual Band Wi-Fi Router Owner's Manual Highlights Fast Connections...
6. [tp-link MU-MIMO Tri-Band Wi-Fi Router Installation Guide](#) tp-link MU-MIMO Tri-Band Wi-Fi Router Quick Installation Guide Configure the...