



JLAB AUDIO
FIT SPORT WIRELESS
EARBUDS

We love that you are rocking JLab Audio!
We take pride in our products and fully stand behind them.



YOUR SATISFACTION IS GUARANTEED

You may exchange or return merchandise within 30 days of the purchase date. Please return the item to the location you purchased it. If your item has been opened or used, restrictions may apply.



YOUR WARRANTY

You may register your product at jlabaudio.com/register. All warranty claims are subject to JLab Audio authorization and at our sole discretion. Retain your proof of purchase to ensure warranty coverage.

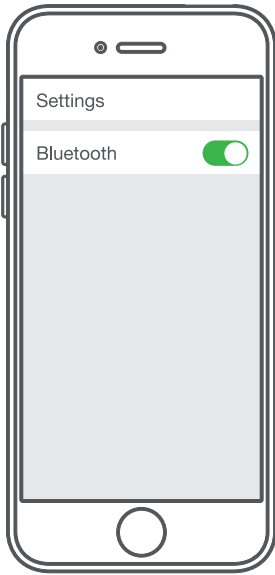


CONTACT US

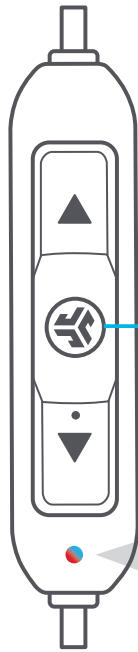
Reach out to us at support@jlabaudio.com or visit jlabaudio.com/contact.

FIRST TIME SETUP: BLUETOOTH PAIRING

- 1 Turn on the Bluetooth in your device settings.



- 2

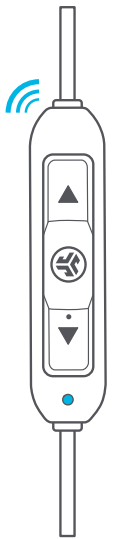
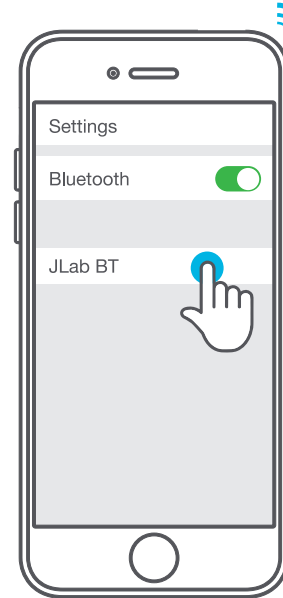


Press and hold button for **10 seconds**.
Release.
Light will **blink red and blue** to indicate pairing mode.



- 3 Select "JLab BT" in your device settings to connect.

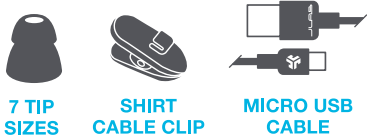
Light will **slow blink blue** when Bluetooth is paired.



RECURRING USE

Once JLab Fit Sport has initially paired to your device, the earbuds will auto-connect to your Bluetooth device when powered back ON. (Follow **BUTTON FUNCTIONS** instructions)

ACCESSORIES



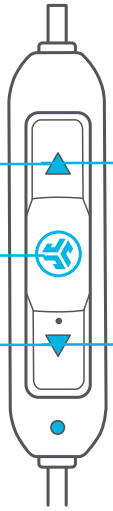
7 TIP SIZES

SHIRT CABLE CLIP

MICRO USB CABLE

BUTTON FUNCTIONS

- VOLUME UP:**
Click once.
- TRACK FORWARD:**
Click and hold 2+ seconds.
- POWER ON:**
Click and hold 3 seconds.
- POWER OFF:**
Click and hold 5 seconds.
- ANSWER / HANG UP CALLS:**
Click once.
- ACTIVATE SIRI (iOS) OR
"OK GOOGLE" (ANDROID):**
Click twice.
- BLUETOOTH PAIRING:**
(Follow First Time Setup:
Bluetooth Pairing)
- VOLUME DOWN:**
Click once.
- TRACK BACKWARD:**
Click and hold 2+ seconds.



EQUALIZER MODES

Quick press both buttons
for different EQ settings
(Fit Sport will cycle 3 EQ settings)

- SIGNATURE**
JLab C3™ signature sound
with amplified vocals and bass
- BALANCED**
Even sound with no additional
sound enhancements
- BASS BOOST**
Amplified bass and sub-bass

VOICE PROMPTS

- "HELLO"**
Power is ON.
- "READY TO PAIR"**
JLab BT earbuds are ready to
connect to your Bluetooth device.
- "YOU'RE CONNECTED"**
JLab BT earbuds are connected
to your Bluetooth device and ready
for use.
- "GOODBYE"**
Power turning OFF.

CHARGING

1 Open USB door and connect the cable to a computer or USB power source to charge. Make sure the charging source is rated at 5v or less.

A diagram showing the earbud with its USB door open. A USB cable is connected to the earbud and plugged into a computer monitor and laptop. Another USB cable is shown plugged into a wall outlet.

2 Light will **turn solid red** when charging and **turn blue** when fully charged.

A diagram showing the earbud's light status. A red light is shown when the earbud is charging, and a blue light is shown when it is fully charged. A side view of the earbud shows the light's location.

FITTING

1 Shape memory wire to your preference

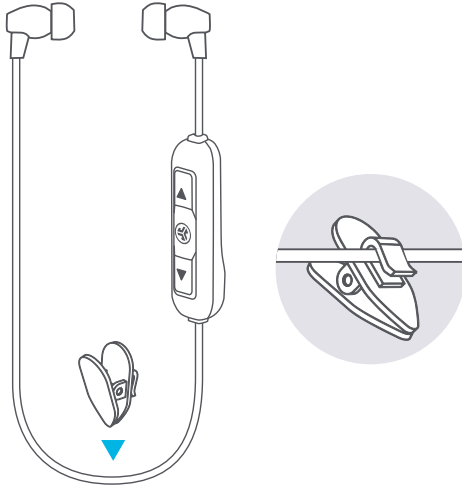
2 Start from the back + rotate around the ear

3 Secure cable in front, back + bottom

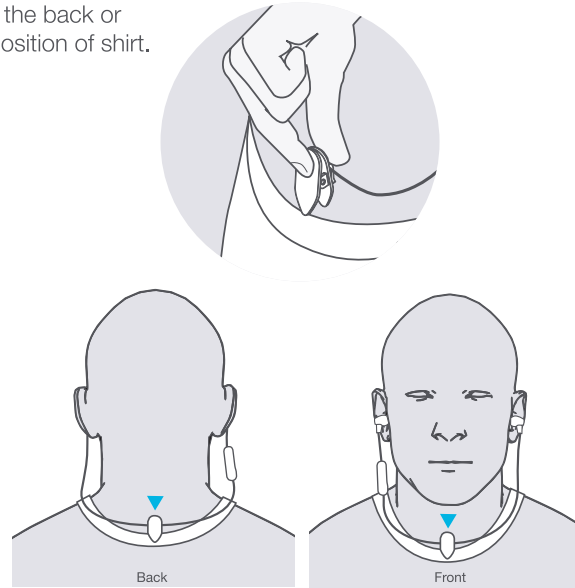
A diagram showing the three steps of fitting the earbud. Step 1 shows the earbud being shaped to fit the ear. Step 2 shows the earbud being rotated around the ear. Step 3 shows the earbud being secured in front, back, and bottom.

CABLE CLIP USE

- 1 Attach the cable clip near the center of the cable.



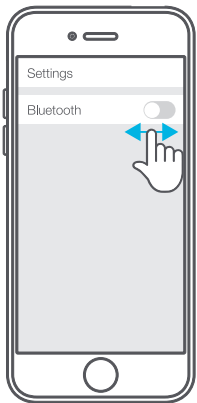
- 2 Clip in the back or front position of shirt.



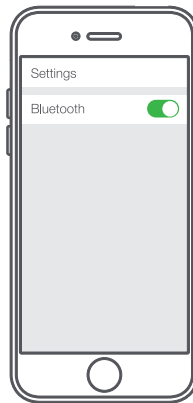
CONNECTION TROUBLESHOOTING

I DO NOT SEE JLAB BT IN MY DEVICE

- 1 Turn Bluetooth off and then back on in device settings.

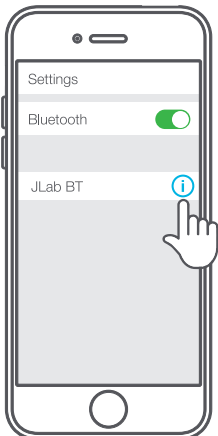


- 2 If you still do not see JLab BT, repeat **FIRST TIME SETUP: BLUETOOTH PAIRING** directions.

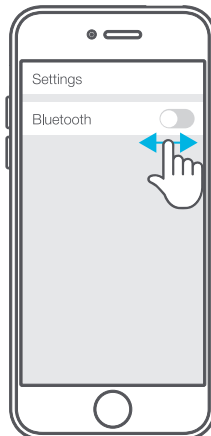


JLAB BT DOES NOT RECONNECT TO MY DEVICE AFTER POWERING ON

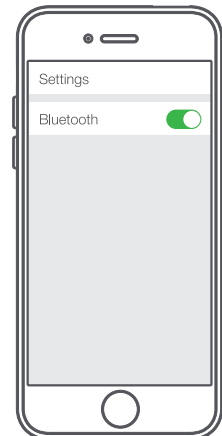
- 1 In device settings, forget the JLab BT.



- 2 Turn Bluetooth off then back on in device settings.



- 3 Repeat **FIRST TIME SETUP: BLUETOOTH PAIRING** directions.

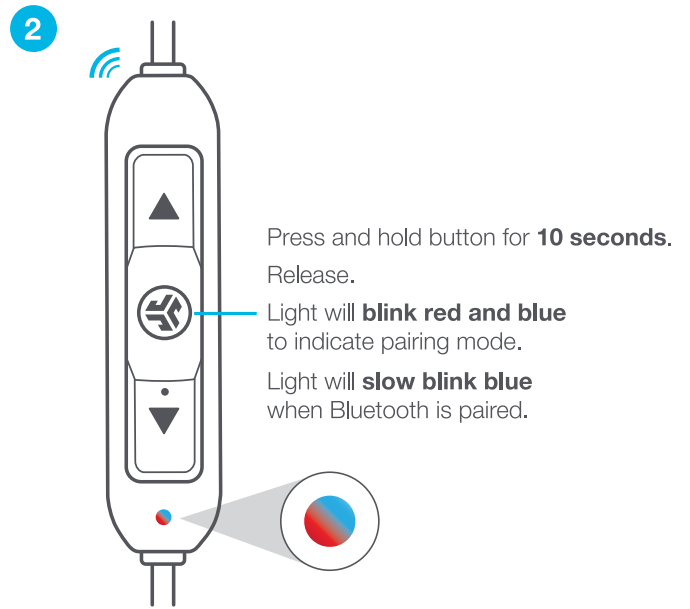
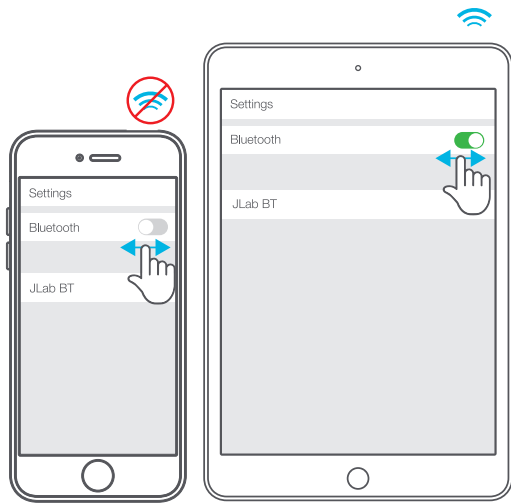


CONNECTION TROUBLESHOOTING (CONTINUED)

BLUETOOTH IS CONNECTING TO AN UNWANTED DEVICE

Note: The JLab BT can remember up to 8 devices. It will try to auto-connect to last device used.

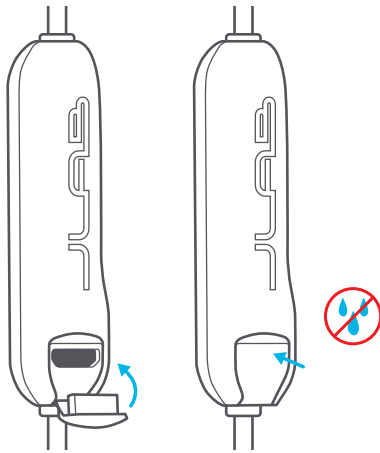
- 1 If you have more than one device that was connected to JLab BT, turn OFF Bluetooth on unwanted devices and turn ON Bluetooth on chosen device.



WARNING

Make sure USB door is closed and fastened.

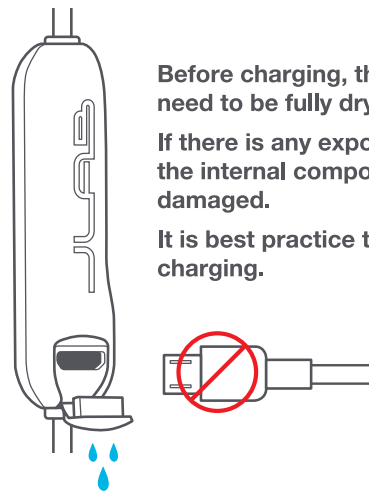
This will protect against sweat and water damage.



Before charging, the Fit Sport earbuds need to be fully dry.

If there is any exposure to moisture, the internal components may become damaged.

It is best practice to air dry before charging.



WARM-UP YOUR HEADPHONES

Optional: Burn-in is the process for exercising new audio equipment. We recommend 40 hours of burn-in time for most headphones to reach optimal performance. The main purpose of the process is to loosen the diaphragm of a newly crafted headphone and to stress the headphone driver. Normal, everyday use can also burn-in the headphones though JLab's proprietary burn-in provides an ideal mix of sounds and frequency sweeps to achieve this.

 Burn-in your audio equipment with the JLab Audio app available on the App Store and Google Play. Or access the burn-in method at: jlabaudio.com/burnin

CAUTIONS

- Avoid getting moisture or liquids into the tip of the earbuds or charging port.
- Avoid extreme heat, cold, and humidity.
- Avoid dropping or crushing the earbuds, stressing the cable by rapid pulling or extreme force, or bending the cable at a sharp angle.
- Wax may build up in the earbud tips, lowering the sound quality. Carefully remove the wax with a cotton swab or other small tool to improve the sound quality.
- If you experience discomfort or pain, try lowering the volume or discontinuing use temporarily.
- If you experience regular discomfort while using this product, discontinue use and consult your physician.
- We recommend you treat your earbuds as you would a nice pair of sunglasses and keep them in safe location when not in use.